



## Rabbit Anti-C1orf25 antibody

SL9784R

<b>Product Name:</b>	C1orf25
<b>Chinese Name:</b>	1号染色体开放阅读框25抗体
<b>Alias:</b>	bG120K12.3; Chromosome 1 open reading frame 25; Hypothetical protein FLJ90512; MST070; MSTP070; N2 antibody N2 dimethylguanosine tRNA methyltransferase like; TRM1L_HUMAN; TRMT1-like protein; Trmt1l.
<b>Organism Species:</b>	Rabbit
<b>Clonality:</b>	Polyclonal
<b>React Species:</b>	Human,Mouse,Rat,Dog,Cow,Horse,Rabbit,Sheep,
<b>Applications:</b>	WB=1:500-2000ELISA=1:500-1000IHC-P=1:400-800IHC-F=1:400-800IF=1:50-200 (Paraffin sections need antigen repair) not yet tested in other applications. optimal dilutions/concentrations should be determined by the end user.
<b>Molecular weight:</b>	82kDa
<b>Cellular localization:</b>	The nucleuscytoplasmic
<b>Form:</b>	Lyophilized or Liquid
<b>Concentration:</b>	1mg/ml
<b>immunogen:</b>	KLH conjugated synthetic peptide derived from human C1orf25:631-733/733
<b>Lsotype:</b>	IgG
<b>Purification:</b>	affinity purified by Protein A
<b>Storage Buffer:</b>	0.01M TBS(pH7.4) with 1% BSA, 0.03% Proclin300 and 50% Glycerol.
<b>Storage:</b>	Store at -20 °C for one year. Avoid repeated freeze/thaw cycles. The lyophilized antibody is stable at room temperature for at least one month and for greater than a year when kept at -20°C. When reconstituted in sterile pH 7.4 0.01M PBS or diluent of antibody the antibody is stable for at least two weeks at 2-4 °C.
<b>PubMed:</b>	<a href="#">PubMed</a>
<b>Product Detail:</b>	C1orf25, also known as TRM1L (TRMT1-like protein), MST070 or MSTP070, is a 733 amino acid protein that belongs to the TRM1 family of proteins. Expressed in a wide variety of tissues, C1orf25 contains one C2H2-type zinc finger and shares sequence similarity with TRMT1, a tRNA methyltransferase that dimethylates guanine at position 26 of tRNAs. As is suggested by observations of C1orf25-deficient mice, C1orf25 is

believed to play a role in exploratory behavior and motor coordination. The gene encoding C1orf25 localizes to chromosome 1 and, due to alternative splicing events, C1orf25 exists as at least two isoforms.

**Function:**

May play a role in motor coordination and exploratory behavior (By similarity).

**Tissue Specificity:**

Widely expressed.

**Similarity:**

Belongs to the TRM1 family.

Contains 1 C2H2-type zinc finger.

**SWISS:**

Q5TEN0

**Gene ID:**

81627

**Database links:**

[Entrez Gene: 81627](#)Human

[Entrez Gene: 98685](#)Mouse

[Entrez Gene: 304851](#)Rat

[Omim: 611673](#)Human

[SwissProt: Q5TEN0](#)Human

[SwissProt: Q7Z2T5](#)Human

[SwissProt: Q9BZQ1](#)Human

[SwissProt: A2RSY6](#)Mouse

[SwissProt: Q496Z9](#)Rat

[Unigene: 107149](#)Human

[Unigene: 591488](#)Human

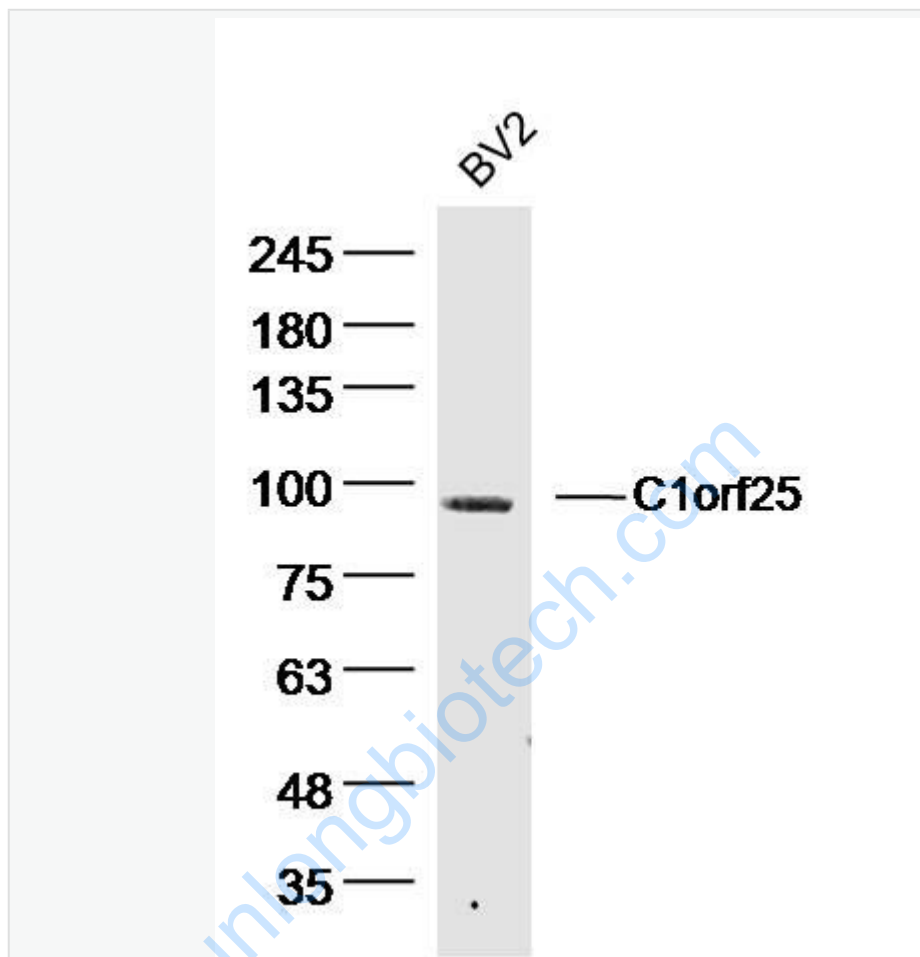
[Unigene: 289373](#)Mouse

[Unigene: 16683](#)Rat

**Important Note:**

This product as supplied is intended for research use only, not for use in human, therapeutic or diagnostic applications.

Picture:



Sample: BV2 Cell (Mouse) Lysate at 40 ug

Primary: Anti-C1orf25 (SL9784R) at 1/300 dilution

Secondary: IRDye800CW Goat Anti-Rabbit IgG at 1/20000 dilution

Predicted band size: 82 kD

Observed band size: 90 kD