



Rabbit Anti-Staufen antibody

SL9877R

Product Name:	Staufen
Chinese Name:	双链RNABinding proteinStaufen抗体
Alias:	Double stranded RNA binding protein Staufen homolog 1; Double stranded RNA binding protein Staufen homolog; Double-stranded RNA-binding protein Staufen homolog 1; Double-stranded RNA-binding protein Staufen homolog; FLJ25010; MGC124588; STAU; STAU1; STAU1_HUMAN; staufen; Staufen RNA binding protein (Drosophila); Staufen RNA binding protein homolog 1.
Organism Species:	Rabbit
Clonality:	Polyclonal
React Species:	Human,Mouse,Rat,Chicken,Cow,Horse,
Applications:	WB=1:500-2000ELISA=1:500-1000IHC-P=1:400-800IHC-F=1:400-800ICC=1:100-500IF=1:50-200 (Paraffin sections need antigen repair) not yet tested in other applications. optimal dilutions/concentrations should be determined by the end user.
Molecular weight:	63, 126kDa
Cellular localization:	cytoplasmic
Form:	Lyophilized or Liquid
Concentration:	1mg/ml
immunogen:	KLH conjugated synthetic peptide derived from human Staufen/STAU1:421-520/577
Lsotype:	IgG
Purification:	affinity purified by Protein A
Storage Buffer:	0.01M TBS(pH7.4) with 1% BSA, 0.03% Proclin300 and 50% Glycerol.
Storage:	Store at -20 °C for one year. Avoid repeated freeze/thaw cycles. The lyophilized antibody is stable at room temperature for at least one month and for greater than a year when kept at -20°C. When reconstituted in sterile pH 7.4 0.01M PBS or diluent of antibody the antibody is stable for at least two weeks at 2-4 °C.
PubMed:	PubMed
Product Detail:	STAU1 (staufen, RNA binding protein, homolog 1) is a 577 amino acid protein that contains three double-stranded RNA-binding domains and is a mammalian homolog of Staufen, a Drosophila protein that is involved in mRNA transport during oogenesis and

zygotic development. Localized to the rough endoplasmic reticulum (RER) and expressed in a variety of tissues, including heart, brain, liver, lung, pancreas, kidney and placenta, STAU1 binds to both Tubulin and double-stranded RNA and is thought to play an important role in mRNA transport from the microtubule network to the RER. Additionally, STAU1 may be involved in cross-linking cytoskeletal components with RNA, an event that is important for proper mRNA positioning during translation. Alternative splicing of the STAU1 gene yields two STAU1 isoforms, designated short and long.

Function:

Binds double-stranded RNA (regardless of the sequence) and tubulin. May play a role in specific positioning of mRNAs at given sites in the cell by cross-linking cytoskeletal and RNA components, and in stimulating their translation at the site.

Subunit:

Binds tubulin. Binds with low affinity single-stranded RNA or DNA homopolymers. Interacts with CASC3 in an RNA-dependent manner (By similarity). Identified in a mRNP complex, at least composed of DHX9, DDX3X, ELAVL1, HNRNPU, IGF2BP1, ILF3, PABPC1, PCBP2, PTBP2, STAU1, STAU2, SYNCRIP and YBX1. Interacts with the influenza virus nonstructural protein NS1.

Subcellular Location:

Cytoplasm. Rough endoplasmic reticulum. Localizes exclusively with the rough reticulum endoplasmic.

Tissue Specificity:

Widely expressed. Expressed in brain, pancreas, heart, skeletal muscles, liver, lung, kidney and placenta.

Similarity:

Contains 3 DRBM (double-stranded RNA-binding) domains.

SWISS:

O95793

Gene ID:

6780

Database links:

[Entrez Gene: 6780](#)Human

[Entrez Gene: 20853](#)Mouse

[Entrez Gene: 84496](#)Rat

[Oimim: 601716](#)Human

[SwissProt: O95793](#)Human

[SwissProt: Q9Z108](#)Mouse

[Unigene: 596704](#)Human

[Unigene: 73276](#)Mouse

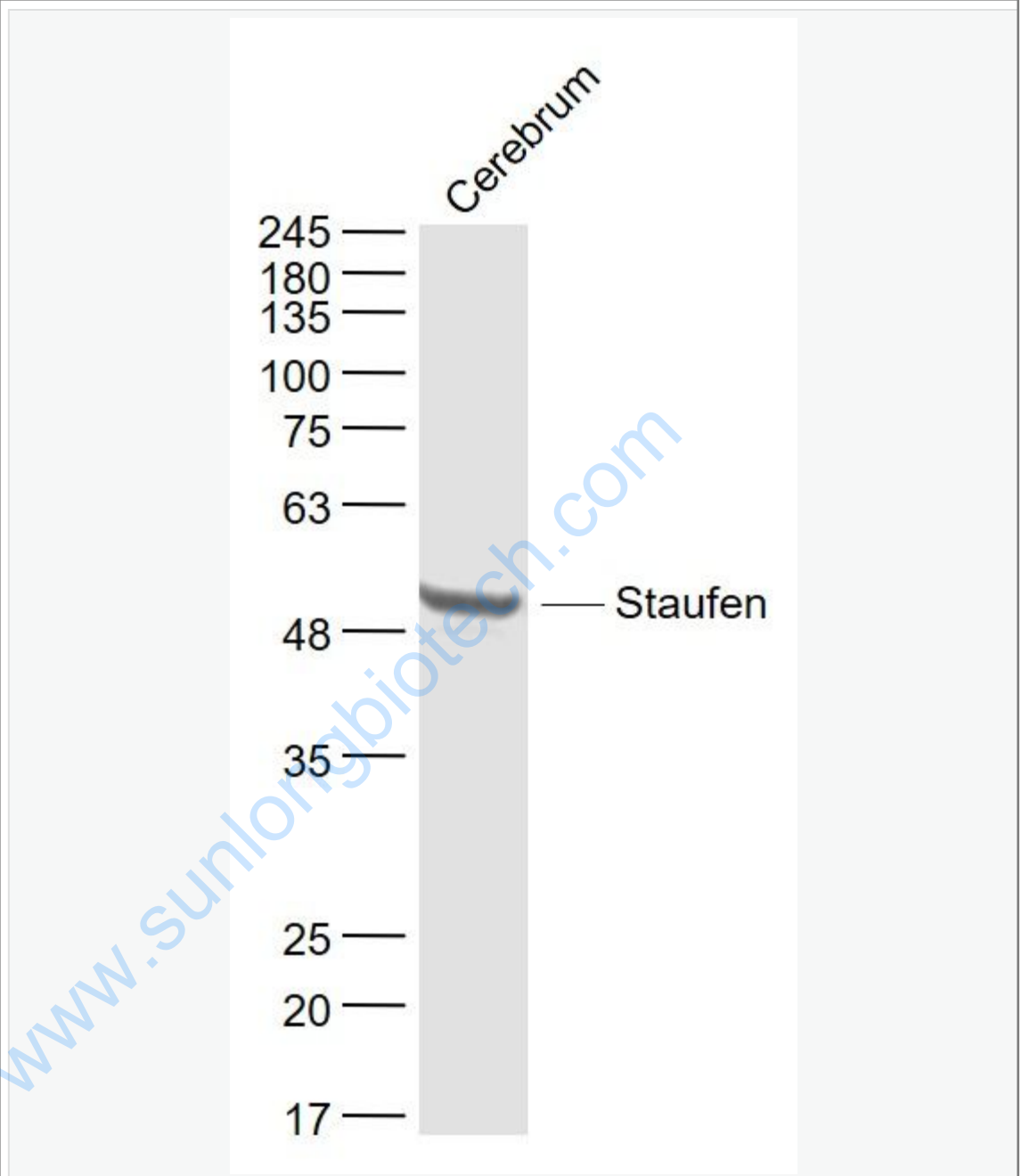
[Unigene: 9028](#)Rat

Important Note:

This product as supplied is intended for research use only, not for use in human, therapeutic or diagnostic applications.

www.sunlongbiotech.com

Picture:



Sample:

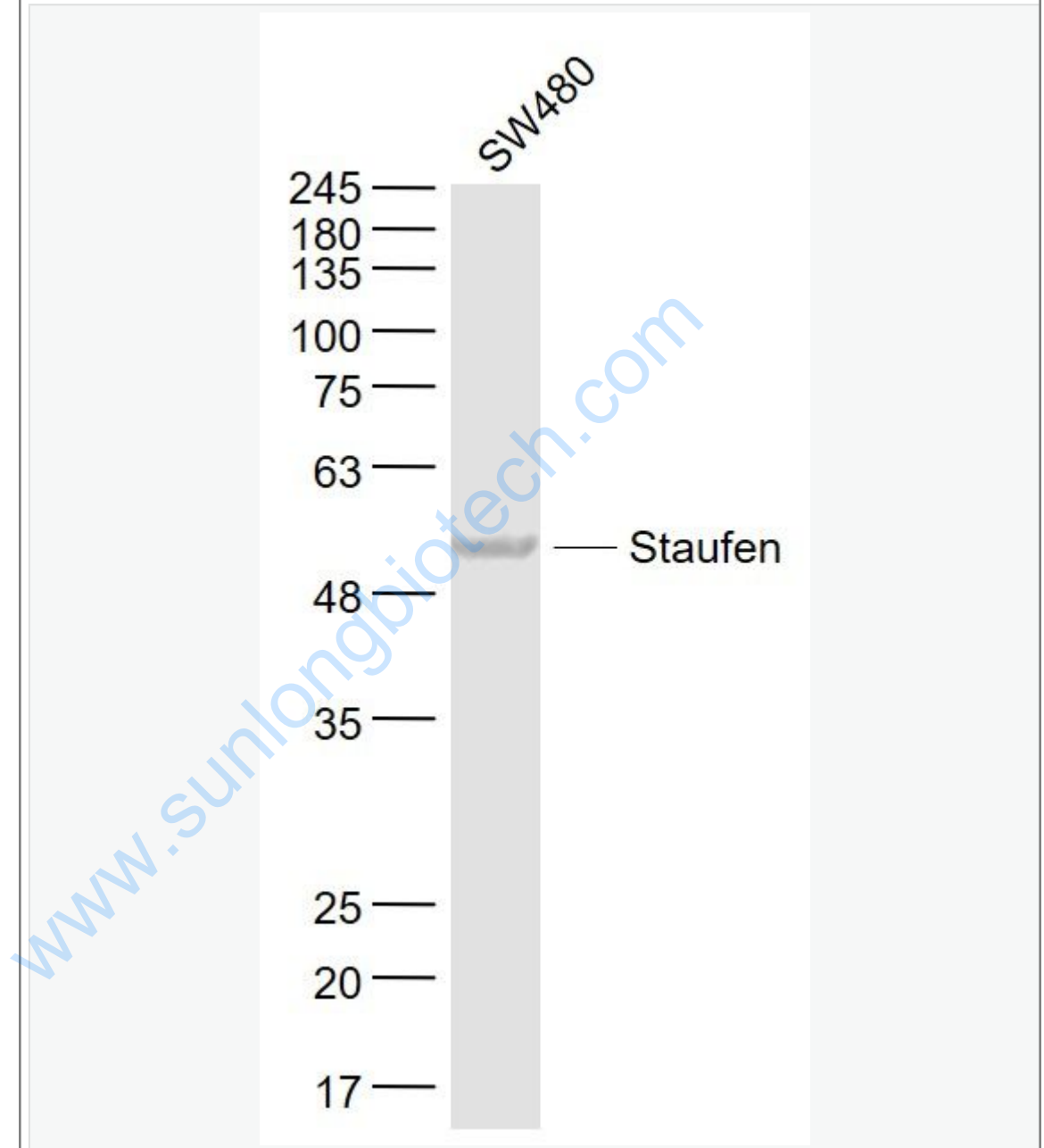
Cerebrum (Mouse) Lysate at 40 ug

Primary: Anti- Staufen (SL9877R) at 1/1000 dilution

Secondary: IRDye800CW Goat Anti-Rabbit IgG at 1/20000 dilution

Predicted band size: 63/126 kD

Observed band size: 55 kD



Sample:

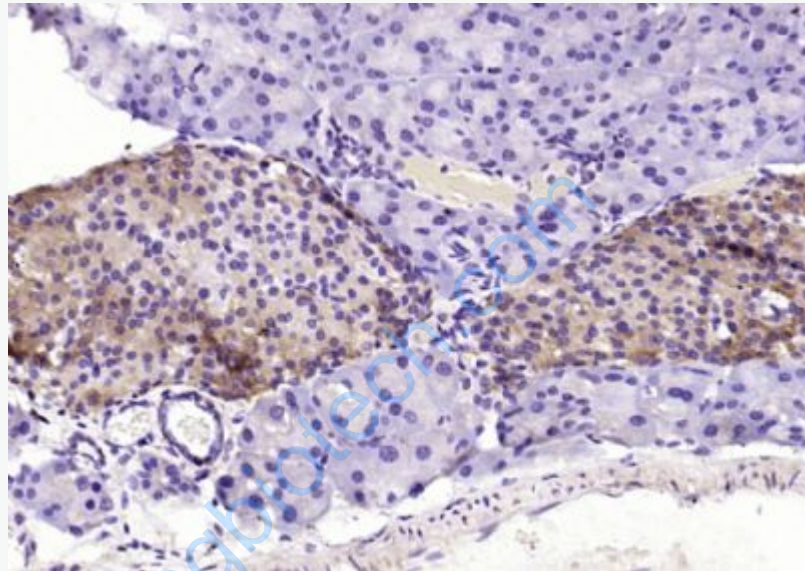
SW480(Human) Cell Lysate at 30 ug

Primary: Anti- Staufen (SL9877R) at 1/1000 dilution

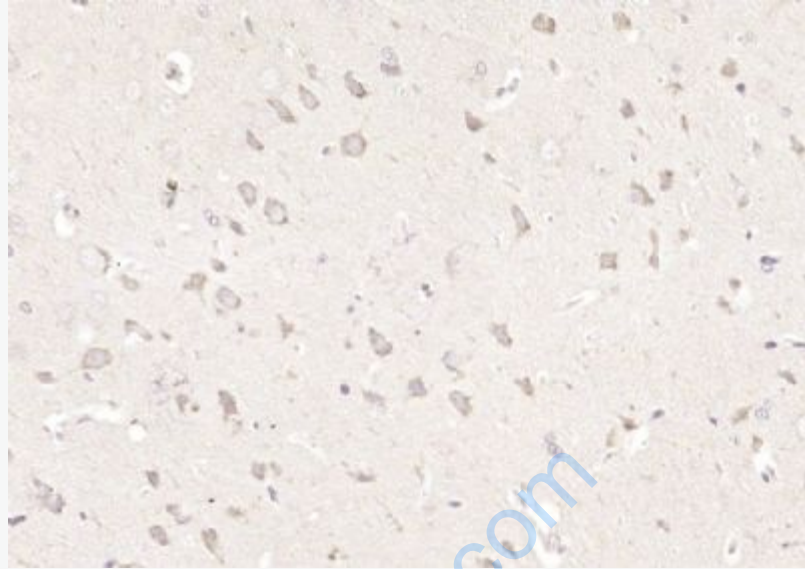
Secondary: IRDye800CW Goat Anti-Rabbit IgG at 1/20000 dilution

Predicted band size: 63/126 kD

Observed band size: 55 kD



Paraformaldehyde-fixed, paraffin embedded (mouse pancreas); Antigen retrieval by boiling in sodium citrate buffer (pH6.0) for 15min; Block endogenous peroxidase by 3% hydrogen peroxide for 20 minutes; Blocking buffer (normal goat serum) at 37°C for 30min; Antibody incubation with (Staufen) Polyclonal Antibody, Unconjugated (SL9877R) at 1:200 overnight at 4°C, followed by operating according to SP Kit(Rabbit) (sp-0023) instructions and DAB staining.



Paraformaldehyde-fixed, paraffin embedded (rat brain); Antigen retrieval by boiling in sodium citrate buffer (pH6.0) for 15min; Block endogenous peroxidase by 3% hydrogen peroxide for 20 minutes; Blocking buffer (normal goat serum) at 37°C for 30min; Antibody incubation with (Staufen) Polyclonal Antibody, Unconjugated (SL9877R) at 1:200 overnight at 4°C, followed by operating according to SP Kit(Rabbit) (sp-0023) instructions and DAB staining.