

**SLM-52289R**

**[Primary Antibody]**

Rabbit Anti-Caspase-3 Monoclonal Antibody

— DATA SHEET —

**Host:** Rabbit

**Target Protein:** Caspase-3

**IR:** Immunogen Range:

**Clonality:** Monoclonal

**Isotype:** IgG

**Entrez Gene:** [836](#)

**Swiss Prot:** [P42574](#)

**Source:** KLH conjugated synthetic peptide derived from human Caspase-3:

**Purification:** affinity purified by Protein A

**Storage:** 0.01M TBS(pH7.4) with 1% BSA, 0.03% Proclin300 and 50% Glycerol. Shipped at 4°C.  
Store at -20 °C for one year. Avoid repeated freeze/thaw cycles.

**Background:** The caspase family of cysteine proteases play a key role in apoptosis. Caspase 3 is the most extensively studied apoptotic protein among caspase family members. Caspase 3 is synthesized as inactive pro enzyme that is processed in cells undergoing apoptosis by self proteolysis and/or cleavage by other upstream proteases (e.g. Caspases 8, 9 and 10). The processed form of Caspase 3 consists of large (17kDa) and small (12kDa) subunits which associate to form an active enzyme. Caspase 3 is cleaved at Asp28 Ser29 and Asp175 Ser176. The active Caspase 3 proteolytically cleaves and activates other caspases (e.g. Caspases 6, 7 and 9), as well as relevant targets in the cells (e.g. PARP and DFF). Alternative splicing of this gene results in two transcript variants which encode the same protein. In immunohistochemical studies Caspase 3 expression has been shown to be widespread but not present in all cell types (e.g. commonly reported in epithelial cells of skin, renal proximal tubules and collecting ducts). Differences in the level of Caspase 3 have been reported in cells of short lived nature (eg germinal centre B cells) and those that are long lived (eg mantle zone B cells). Caspase 3 is the predominant caspase involved in the cleavage of amyloid beta 4A precursor protein, which is associated with neuronal death in Alzheimer's disease.

**Size:** 100ul

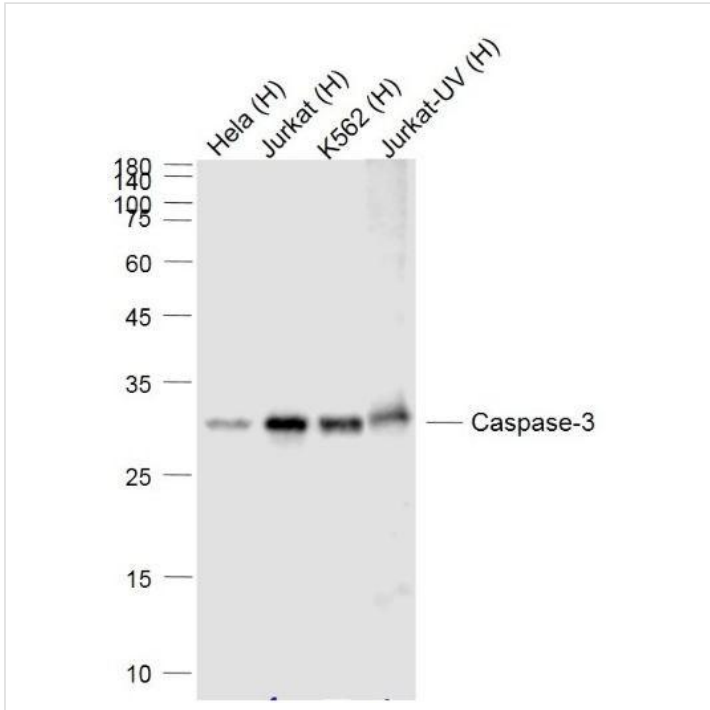
**Concentration:** 1mg/ml

**Applications:** WB(1:1000-5000)  
IP(1:10-50)  
IHC-P(1:20-50)  
IHC-F(1:50-200)  
ICC(1:50-100)

**Cross Reactive Human  
Species:** Rat

For research use only. Not intended for diagnostic or therapeutic use.

VALIDATION IMAGES



Sample:

Lane 1: HeLa (Human) Cell Lysate at 30 ug

Lane 2: Jurkat (Human) Cell Lysate at 30 ug

Lane 3: K562 (Human) Cell Lysate at 30 ug

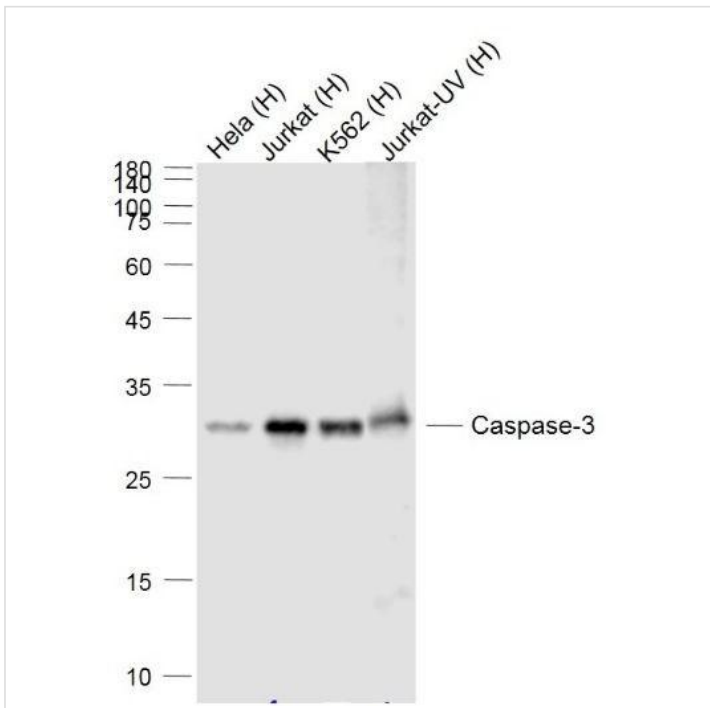
Lane 4: Jurkat-UV (Human) Cell Lysate at 30 ug

Primary: Anti-Caspase-3 (bsm-52289R) at 1/1000 dilution

Secondary: IRDye800CW Goat Anti-Rabbit IgG at 1/20000 dilution

Predicted band size: 35 kD

Observed band size: 30 kD



Sample:

Lane 1: HeLa (Human) Cell Lysate at 30 ug

Lane 2: Jurkat (Human) Cell Lysate at 30 ug

Lane 3: K562 (Human) Cell Lysate at 30 ug

Lane 4: Jurkat-UV (Human) Cell Lysate at 30 ug

Primary: Anti-Caspase-3 (bsm-52289R) at 1/1000 dilution

Secondary: IRDye800CW Goat Anti-Rabbit IgG at 1/20000 dilution

Predicted band size: 35 kD

Observed band size: 30 kD