

Active Interleukin 16 (IL16)

Instruction Manual

SBPA041Hu01

Homo sapiens (Human)

Buffer Formulation

20mM Tris, 150mM NaCl, pH8.0, containing 1mM EDTA, 1mM DTT, 0.01% SKL, 5% Trehalose and Proclin300.

Traits

Freeze-dried powder

Purity

> 97%

Isoelectric Point

6.0

Applications

Cell culture; Activity Assays.

ACTIVITY TEST



A



B

Pro-IL16 (Interleukin16) is a 631 amino acid precursor molecule, which is then cleaved into different isoforms. Researches have shown that the recombinant human IL16, containing C-terminal 130 amino acids, has same bioactivity as the natural secreted human IL16. Besides, IL16 has been considered to stimulate the proliferation of Jurkat cells at low dose (10^{-9} M). Thus, a proliferation assay of recombinant human IL16 was conducted using Jurkat cells. Briefly, Jurkat cells were seeded into triplicate wells of 96-well plates at a density of 10,000 cells/well in RPMI-1640 with the addition of various concentrations of IL16. After incubated for 72h, cells were observed by inverted microscope and cell proliferation was measured by Cell Counting Kit-8 (CCK-8).

Briefly, 10 μ L of CCK-8 solution was added to each well of the plate, then the absorbance at 450nm was measured using a microplate reader after incubating the plate for 1-4 hours at 37°C. Cell proliferation of Jurkat cells after incubation with IL16 for 72h observed by inverted microscope was shown in Figure 1. The CCK-8 data was shown in Figure 2. It was obvious that IL16 significantly promoted cell proliferation of Jurkat cells. Figure. Cell proliferation of Jurkat cells after stimulated with IL16.

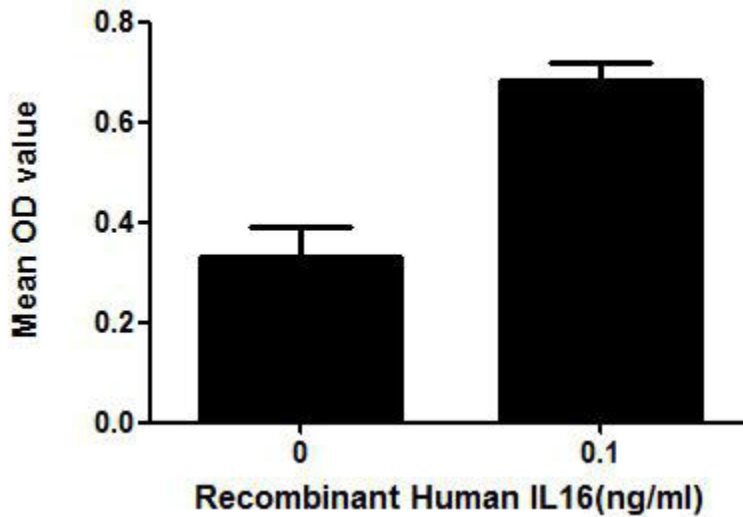


Figure. Cell proliferation of Jurkat cells after stimulated with IL16.

USAGE

Reconstitute in 20mM Tris, 150mM NaCl (pH8.0) to a concentration of 0.1-1.0 mg/mL. Do not vortex.

STORAGE

Avoid repeated freeze/thaw cycles. Store at 2-8°C for one month. Aliquot and store at -80°C for 12 months.

STABILITY

The thermal stability is described by the loss rate. The loss rate was determined by accelerated thermal degradation test, that is, incubate the protein at 37°C for 48h, and no obvious degradation and precipitation were observed. The loss rate is less than 5% within the expiration date under appropriate storage condition.

Image

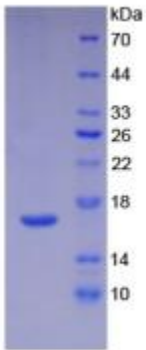


Figure. SDS-PAGE

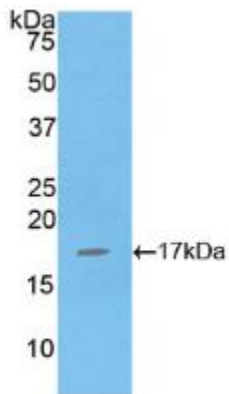


Figure. Western Blot; Sample: Recombinant IL16, Human.

[IMPORTANT NOTE]

The kit is designed for research use only, we will not be responsible for any issue if the kit was used in clinical diagnostic or any other procedures.