

# Active Interleukin 18 (IL18)

## Instruction Manual

### SBPA043Mu01

#### Mus musculus (Mouse)

#### Buffer Formulation

20mM Tris, 150mM NaCl, pH8.0, containing 1mM EDTA, 1mM DTT, 0.01% SKL, 5% Trehalose and Proclin300.

#### Traits

Freeze-dried powder

#### Purity

> 90%

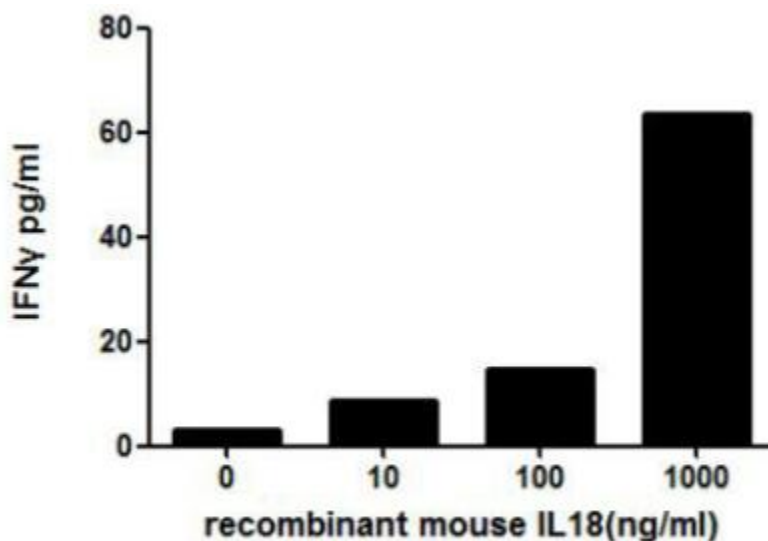
#### Isoelectric Point

5.0

#### Applications

Cell culture; Activity Assays.

#### ACTIVITY TEST



**Figure 1. IFN $\gamma$  concentration in the cell supernatant of murine spleen cells up-regulated by IL18**

IL18 (interleukin 18) is a cytokine that shares similarities in structure with IL1, and is produced by macrophages and other cells. IL18 has been reported to stimulate T cells proliferation and NK cell activity, besides, murine IL18 has been found to enhance the production of IFN $\gamma$  in spleen cells in vitro. Thus, a stimulation assay was conducted to detect the activity of IL18 using murine spleen cells. Briefly, murine spleen cells were seeded into wells of 6-well plates at a density of  $2 \times 10^6$  cells/mL in RPMI-1640 with the addition of various concentrations of IL18. After incubation for 48 hours, the concentration of IFN $\gamma$  in the cell supernatant was detected using an ELISA kit. IFN $\gamma$

levels in the cell supernatant of spleen cells increased significantly after stimulated with IL18, the data was shown in Figure 1.

## USAGE

Reconstitute in 20mM Tris, 150mM NaCl (pH8.0) to a concentration of 0.1-1.0 mg/mL. Do not vortex.

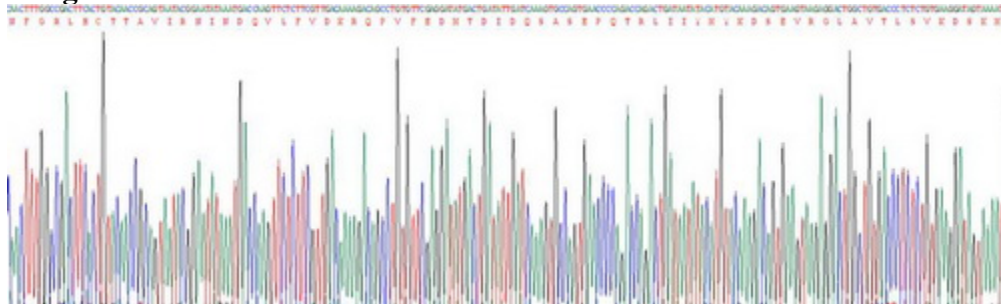
## STORAGE

Avoid repeated freeze/thaw cycles. Store at 2-8°C for one month. Aliquot and store at -80°C for 12 months.

## STABILITY

The thermal stability is described by the loss rate. The loss rate was determined by accelerated thermal degradation test, that is, incubate the protein at 37°C for 48h, and no obvious degradation and precipitation were observed. The loss rate is less than 5% within the expiration date under appropriate storage condition.

## Image



SDS-PAGE Image

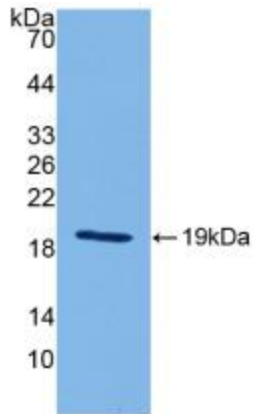


Figure. Western Blot; Sample: Recombinant IL18, Mouse.

**[IMPORTANT NOTE]**

The kit is designed for research use only, we will not be responsible for any issue if the kit was used in clinical diagnostic or any other procedures.