

Active Interleukin 1 Receptor Type I (IL1R1) Instruction Manual

SBPA044Ra01

Rattus norvegicus (Rat)

Buffer Formulation

20mM Tris, 150mM NaCl, pH8.0, containing 1mM EDTA, 1mM DTT, 0.01% SKL, 5% Trehalose and Proclin300.

Traits

Freeze-dried powder

Purity

> 97%

Isoelectric Point

6.7

Applications

Cell culture; Activity Assays.

ACTIVITY TEST

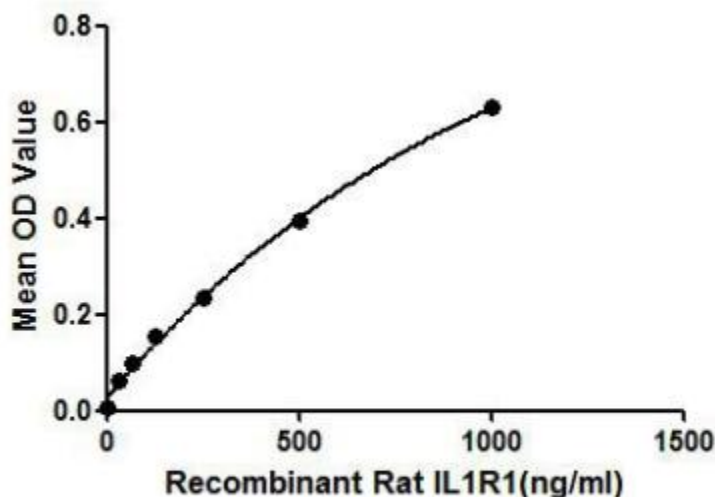


Figure 1. The binding activity of IL1R1 with IL1B.

IL1R1 (Interleukin 1 Receptor Type I), also known as CD121a, is an important mediator involved in many cytokine induced immune and inflammatory responses. It belongs to the interleukin-1 receptor family, and is a receptor for interleukin 1 alpha (IL1A), interleukin 1 beta (IL1B), and interleukin 1 receptor antagonist (IL1RA). Besides, mouse IL1B shares 87.0% AA sequence identity with rat IL1B, suggesting the exist of cross-species activity. Thus, a binding ELISA assay was constructed to detect the association of recombinant rat IL1R1 with recombinant mouse IL1B. Briefly, IL1R1 were diluted serially in PBS with 0.1%BSA (pH 7.4). Duplicate samples of 100uL were then transferred to IL1B-coated microtiter wells and incubated for 2h at 37°C. Wells were washed with PBST and incubated for 1h with anti-IL1R1 pAb, then aspirated and washed

3 times. After incubation with HRP labelled secondary antibody, wells were aspirated and washed 3 times. With the addition of substrate solution, wells were incubated 15-25 minutes at 37°C. Finally, add 50µL stop solution to the wells and read at 450nm immediately. The binding activity of IL1R1 with IL1B was shown in Figure 1 and this effect was in a dose dependent manner.

USAGE

Reconstitute in 20mM Tris, 150mM NaCl (pH8.0) to a concentration of 0.1-1.0 mg/mL. Do not vortex.

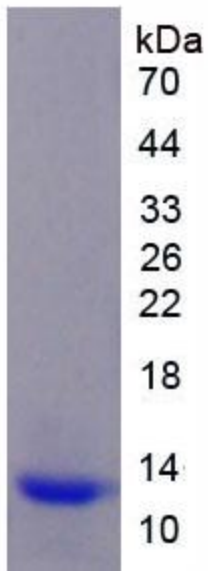
STORAGE

Avoid repeated freeze/thaw cycles. Store at 2-8°C for one month. Aliquot and store at -80°C for 12 months.

STABILITY

The thermal stability is described by the loss rate. The loss rate was determined by accelerated thermal degradation test, that is, incubate the protein at 37°C for 48h, and no obvious degradation and precipitation were observed. The loss rate is less than 5% within the expiration date under appropriate storage condition.

Image



SDS-PAGE Image

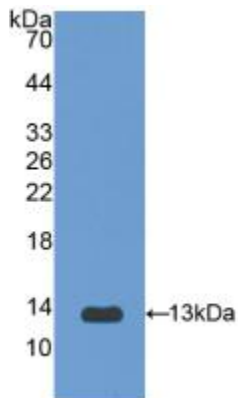


Figure. Western Blot; Sample: Recombinant IL1R1, Rat.

[IMPORTANT NOTE]

The kit is designed for research use only, we will not be responsible for any issue if the kit was used in clinical diagnostic or any other procedures.