

Active Interleukin 6 (IL6) Instruction Manual

SBPA051Mu61

Mus musculus (Mouse)

Buffer Formulation

20mM Tris, 150mM NaCl, pH8.0, containing 1mM EDTA, 1mM DTT, 0.01% SKL, 5% Trehalose and Proclin300.

Traits

Freeze-dried powder

Purity

> 95%

Isoelectric Point

6.5

Applications

Cell culture; Activity Assays.

ACTIVITY TEST

Sample (cell supernatant of HepG2 cells)	O.D. value	Corrected	Concentration of CRP (ng/mL)
stimulated with IL6 (10ng/mL)	0.514	0.453	1.61
stimulated with IL6 (30ng/mL)	0.396	0.335	1.13
unstimulated	0.128	0.067	0.03

Table 1. CRP levels in the cell supernatant of HepG2 cells regulated by IL6.

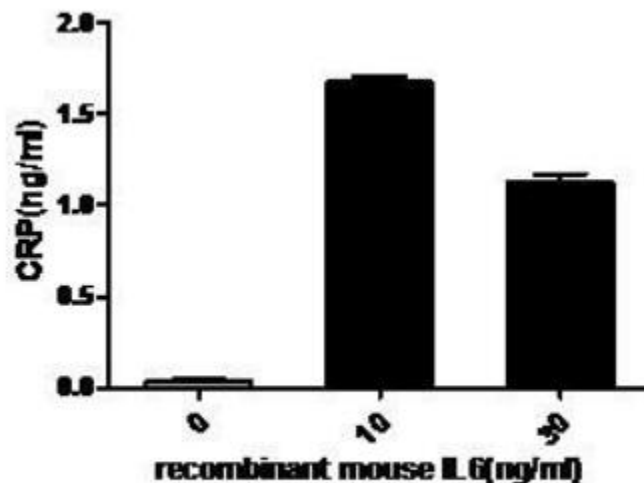


Figure 1. CRP levels in the cell supernatant of HepG2 cells regulated by IL6.

Interleukin-6 (IL-6), a pro-inflammatory cytokine and an anti-inflammatory myokine, plays important roles in the acute phase reaction, inflammation, hematopoiesis, bone metabolism, and cancer progression. It has been reported that IL6 induces C-reactive protein (CRP) expression through the STAT3 pathway in HepG2 cells. To test this effect, HepG2 cells were seeded overnight at a density of 1×10^5 cells/mL, and treated with or without various concentrations of IL6 for 24h and CRP levels in the cell supernatant were determined by ELISA.

CRP levels in the cell supernatant of HepG2 cells increased significantly after stimulated with IL6, the data was shown in Table 1 and Figure 1.

USAGE

Reconstitute in 20mM Tris, 150mM NaCl (PH8.0) to a concentration of 0.1-1.0 mg/mL. Do not vortex.

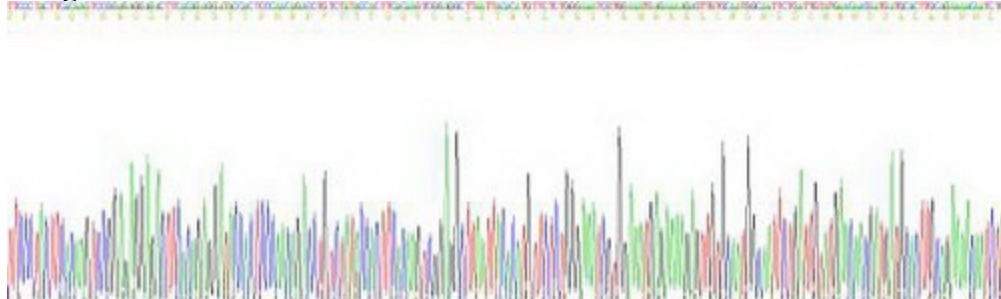
STORAGE

Avoid repeated freeze/thaw cycles. Store at 2-8°C for one month. Aliquot and store at -80°C for 12 months.

STABILITY

The thermal stability is described by the loss rate. The loss rate was determined by accelerated thermal degradation test, that is, incubate the protein at 37°C for 48h, and no obvious degradation and precipitation were observed. The loss rate is less than 5% within the expiration date under appropriate storage condition.

Image



SDS-PAGE Image

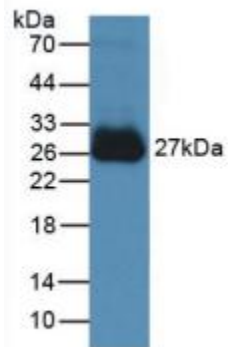


Figure. Western Blot;Sample: Recombinant IL6, Mouse.

[IMPORTANT NOTE]

The kit is designed for research use only, we will not be responsible for any issue if the kit was used in clinical diagnostic or any other procedures.