

Active Leukemia Inhibitory Factor (LIF) Instruction Manual

SBPA056Mu01

Mus musculus (Mouse)

Buffer Formulation

PBS, pH7.4, containing 0.01% SKL, 1mM DTT, 5% Trehalose and Proclin300.

Traits

Freeze-dried powder

Purity

> 95%

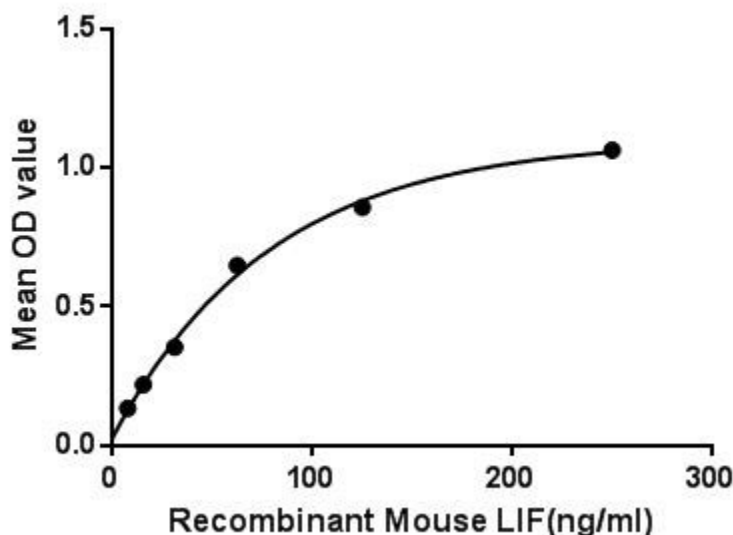
Isoelectric Point

9.1

Applications

Cell culture; Activity Assays.

ACTIVITY TEST



Leukemia inhibitory factor (LIF), is an interleukin 6 class cytokine that affects cell growth by inhibiting differentiation. LIF as a cytokine also has another function including: the growth promotion and cell differentiation of different types of target cells, influence on bone metabolism, cachexia, neural development, embryogenesis and inflammation. Besides, Colony Stimulating Factor Receptor, Granulocyte (GCSFR) has been identified as an interactor of LIF, thus a binding ELISA assay was conducted to detect the interaction of recombinant mouse LIF and recombinant mouse GCSFR. Briefly, LIF were diluted serially in PBS, with 0.01% BSA (pH 7.4). Duplicate samples of 100 μ L were then transferred to GCSFR-coated microtiter wells and incubated for 2h at 37°C. Wells were washed with PBST and incubated for 1h with anti-LIF pAb, then aspirated and washed 3

times. After incubation with HRP labelled secondary antibody, wells were aspirated and washed 3 times. With the addition of substrate solution, wells were incubated 15-25 minutes at 37°C. Finally, add 50µL stop solution to the wells and read at 450nm immediately. The binding activity of LIF and GCSFR was shown in Figure 1, and this effect was in a dose dependent manner. Figure. The binding activity of LIF with GCSFR.

USAGE

Reconstitute in 10mM PBS (pH7.4) to a concentration of 0.1-1.0 mg/mL. Do not vortex.

STORAGE

Avoid repeated freeze/thaw cycles. Store at 2-8°C for one month. Aliquot and store at -80°C for 12 months.

STABILITY

The thermal stability is described by the loss rate. The loss rate was determined by accelerated thermal degradation test, that is, incubate the protein at 37°C for 48h, and no obvious degradation and precipitation were observed. The loss rate is less than 5% within the expiration date under appropriate storage condition.

Image

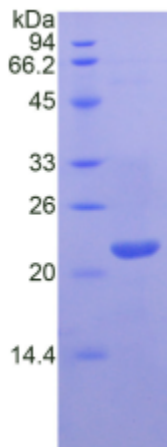


Figure. SDS-PAGE

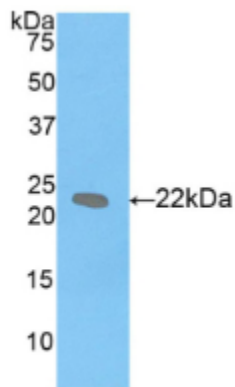


Figure. Western Blot

[IMPORTANT NOTE]

The kit is designed for research use only, we will not be responsible for any issue if the kit was used in clinical diagnostic or any other procedures.