

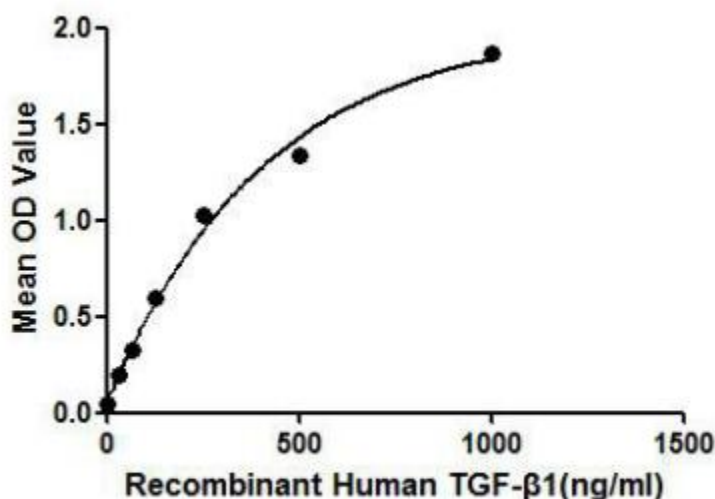
# Active Transforming Growth Factor Beta 1 (TGFβ1) Instruction Manual

**SBPA079Hu01**

**Homo sapiens (Human)**

<b>Buffer Formulation</b>	20mM Tris, 150mM NaCl, pH8.0, containing 1mM EDTA, 1mM DTT, 0.01% SKL, 5% Trehalose and Proclin300.
<b>Traits</b>	Freeze-dried powder
<b>Purity</b>	> 97%
<b>Isoelectric Point</b>	8.4
<b>Applications</b>	Cell culture; Activity Assays.

## ACTIVITY TEST



**Figure 1. The binding activity of TGF-β1 with LTBP1.**

TGF-β1 (Transforming growth factor beta 1) is a multifunctional set of peptides that controls proliferation, differentiation, and other functions in many cell types. TGF beta 1 has been shown to interact with TGF beta receptor 1, Decorin, LTBP1 and so on. Thus we have conducted a binding ELISA assay to detect the interaction of recombinant human TGF-β1 with recombinant human LTBP1. Briefly, TGF-β1 were diluted serially in PBS, with 0.01%BSA (pH 7.4). Duplicate samples of 100uL were then transferred to LTBP1-coated microtiter wells and incubated for 2h at 37°C. Wells were washed with PBST and incubated for 1h with anti-LTBP1 pAb, then aspirated and washed 3 times. After incubation with HRP labelled secondary antibody, wells were aspirated and washed 3 times. With the addition of substrate solution, wells were incubated 15-25 minutes at

37°C. Finally, add 50µL stop solution to the wells and read at 450nm immediately. The binding activity of TGF-β1 with LTBP1 was shown in Figure 1 and this effect was in a dose dependent manner.

## USAGE

Reconstitute in 20mM Tris, 150mM NaCl (PH8.0) to a concentration of 0.1-1.0 mg/mL. Do not vortex.

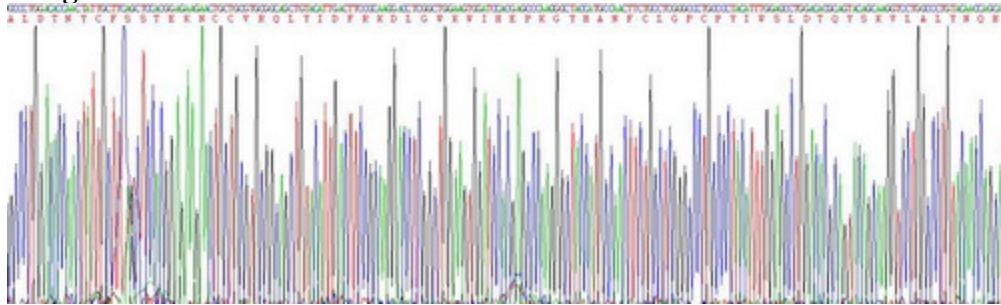
## STORAGE

Avoid repeated freeze/thaw cycles. Store at 2-8°C for one month. Aliquot and store at -80°C for 12 months.

## STABILITY

The thermal stability is described by the loss rate. The loss rate was determined by accelerated thermal degradation test, that is, incubate the protein at 37°C for 48h, and no obvious degradation and precipitation were observed. The loss rate is less than 5% within the expiration date under appropriate storage condition.

## Image



SDS-PAGE Image

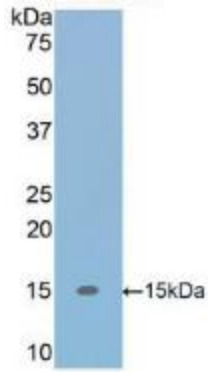


Figure. Western Blot; Sample: Recombinant TGFb1, Human.

**[IMPORTANT NOTE]**

The kit is designed for research use only, we will not be responsible for any issue if the kit was used in clinical diagnostic or any other procedures.