

Active Tumor Necrosis Factor Related Apoptosis Inducing Ligand (TRAIL) Instruction Manual

SBPA086Hu01

Homo sapiens (Human)

Buffer Formulation

20mM Tris, 150mM NaCl, pH8.0, containing 1mM EDTA, 1mM DTT, 0.01% SKL, 5% Trehalose and Proclin300.

Traits

Liquid

Purity

> 95%

Isoelectric Point

8.6

Applications

Cell culture; Activity Assays.

ACTIVITY TEST

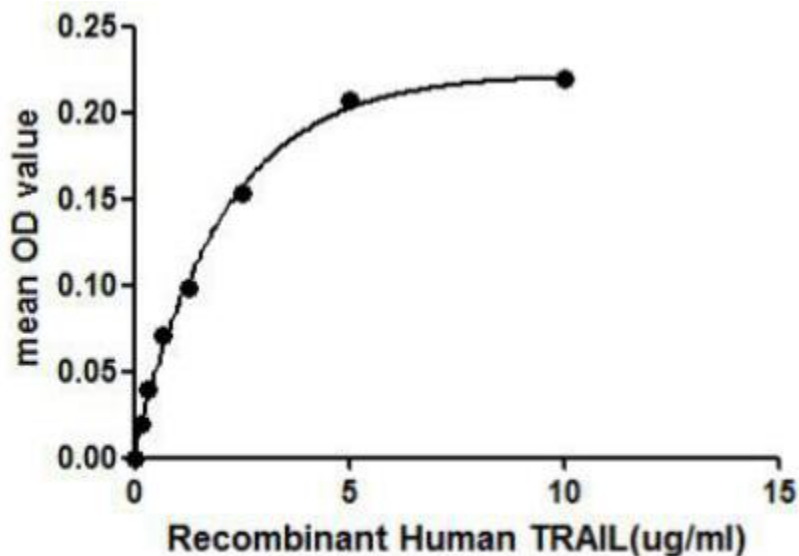


Figure 1. The binding activity of TRAIL with TNFRSF10B

Protein TRAIL (TNF-Related Apoptosis-Inducing Ligand) is a cytokine that belongs to the tumor necrosis factor (TNF) ligand family. TRAIL induces apoptosis in transformed and tumor cells. This protein binds to several members of TNF receptor superfamily including TNFRSF10B/TRAILR2. Thus a binding ELISA assay was conducted to detect the interaction of TRAIL and TNFRSF10B. Briefly, recombinant human TRAIL were diluted serially in PBS, with 0.01%BSA (pH 7.4). Duplicate samples of 100uL were then transferred to TNFRSF10B-coated microtiter wells and incubated for 2h at 37°C. Wells

were washed with PBST and incubated for 1h with anti-TRAIL pAb, then aspirated and washed 3 times. After incubation with HRP labelled secondary antibody, wells were aspirated and washed 3 times. With the addition of substrate solution, wells were incubated 15-25 minutes at 37°C. Finally, add 50µL stop solution to the wells and read at 450nm immediately. The binding activity of TRAIL and TNFRSF10B was shown in Figure 1, and this effect was in a dose dependent manner.

USAGE

Reconstitute in 20mM Tris, 150mM NaCl (pH8.0) to a concentration of 0.1-1.0 mg/mL. Do not vortex.

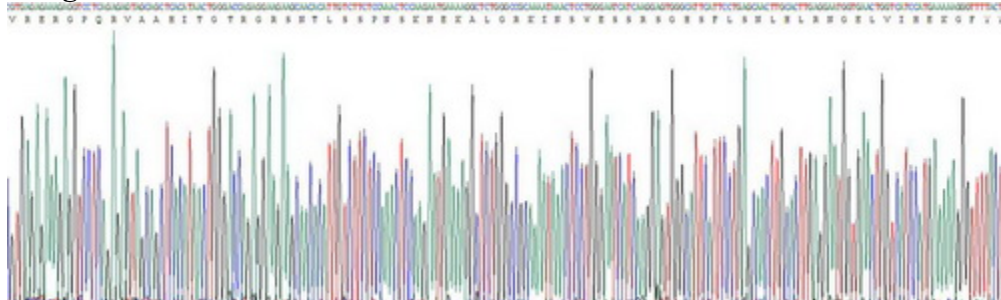
STORAGE

Avoid repeated freeze/thaw cycles. Store at 2-8°C for one month. Aliquot and store at -80°C for 12 months.

STABILITY

The thermal stability is described by the loss rate. The loss rate was determined by accelerated thermal degradation test, that is, incubate the protein at 37°C for 48h, and no obvious degradation and precipitation were observed. The loss rate is less than 5% within the expiration date under appropriate storage condition.

Image



SDS-PAGE Image

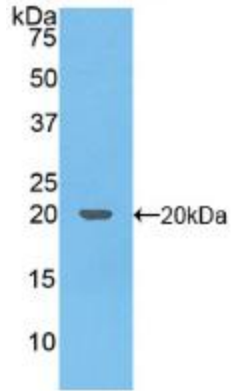


Figure. Western Blot; Sample: Recombinant TRAIL, Human.

[IMPORTANT NOTE]

The kit is designed for research use only, we will not be responsible for any issue if the kit was used in clinical diagnostic or any other procedures.