

Active Interleukin 1 Receptor Antagonist (IL1RA) Instruction Manual

SBPA103Hu61

Homo sapiens (Human)

Buffer Formulation

PBS, pH7.4, containing 0.01% SKL, 1mM DTT, 5% Trehalose and Proclin300.

Traits

Freeze-dried powder

Purity

> 95%

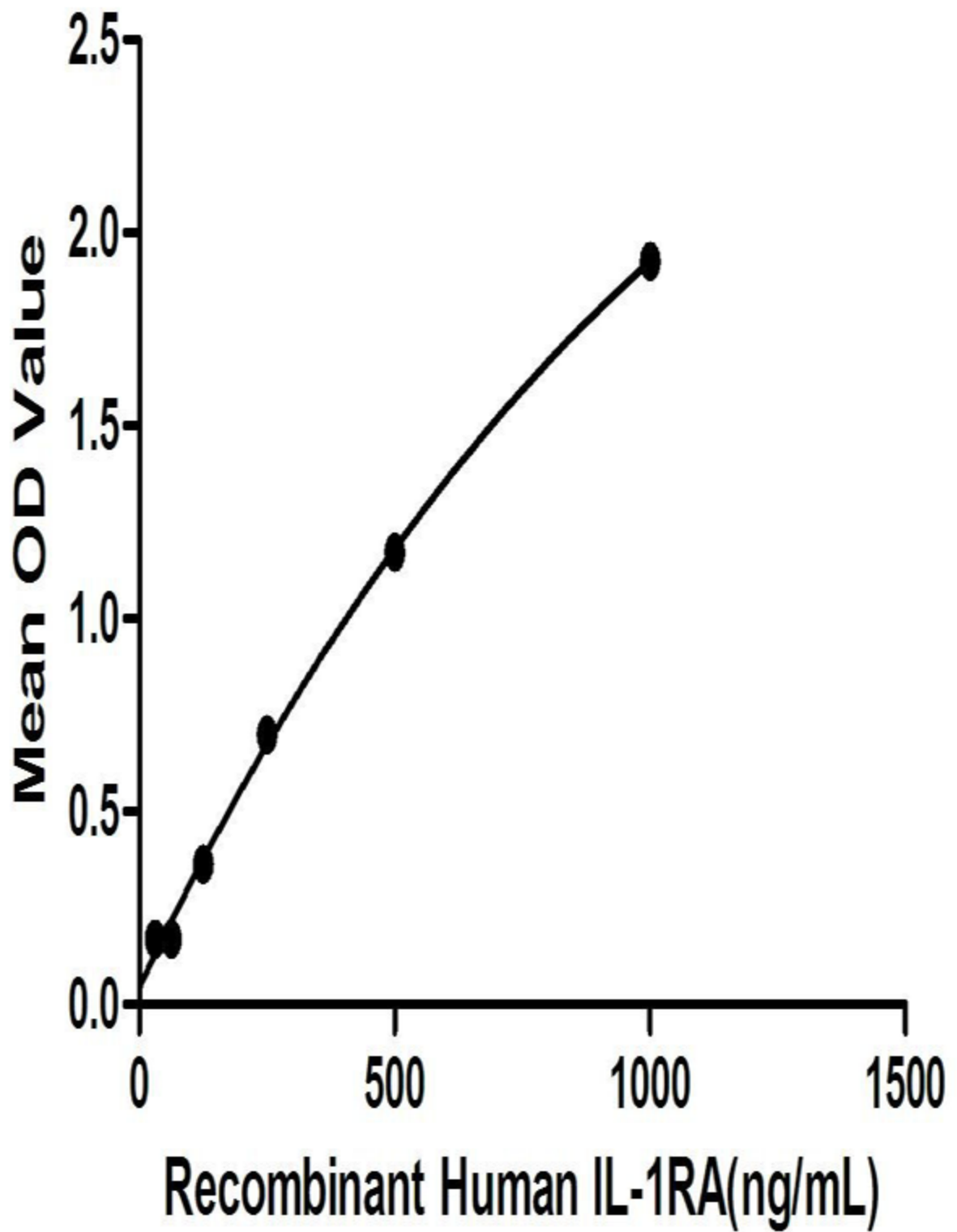
Isoelectric Point

5.4

Applications

Cell culture; Activity Assays.

ACTIVITY TEST



IL-1RA is an agent that binds non-productively to the cell surface interleukin-1 receptor (IL-1R), the same receptor that binds interleukin 1 (IL-1), preventing IL-1 from sending a signal to that cell. Besides, Interleukin 1 Alpha (IL-1a) has been identified as an interactor of IL-1RA, thus a binding ELISA assay was conducted to detect the interaction of recombinant human IL-1RA and recombinant human IL-1a. Briefly, IL1RA were diluted serially in PBS, with 0.01% BSA (pH 7.4). Duplicate samples of 100 μ L were then transferred to IL-1a-coated microtiter wells and incubated for 2 h at 37°C. Wells were washed with PBST and incubated for 1 h with anti-IL-1RA pAb, then aspirated and washed 3 times. After incubation with HRP labelled secondary antibody, wells were aspirated and washed 3 times. With the addition of substrate solution, wells were incubated 15-25 minutes at 37°C. Finally, add 50 μ L stop solution to the wells and read at 450nm immediately. The binding activity of IL-1RA and IL-1a was shown in Figure 1, and this effect was in a dose dependent manner. Figure. The binding activity of IL-1RA with IL-1a.

USAGE

Reconstitute in 10mM PBS (pH7.6) to a concentration of 0.1-1.0 mg/mL. Do not vortex.

STORAGE

Avoid repeated freeze/thaw cycles. Store at 2-8°C for one month. Aliquot and store at -80°C for 12 months.

STABILITY

The thermal stability is described by the loss rate. The loss rate was determined by accelerated thermal degradation test, that is, incubate the protein at 37°C for 48h, and no obvious degradation and precipitation were observed. The loss rate is less than 5% within the expiration date under appropriate storage condition.

Image

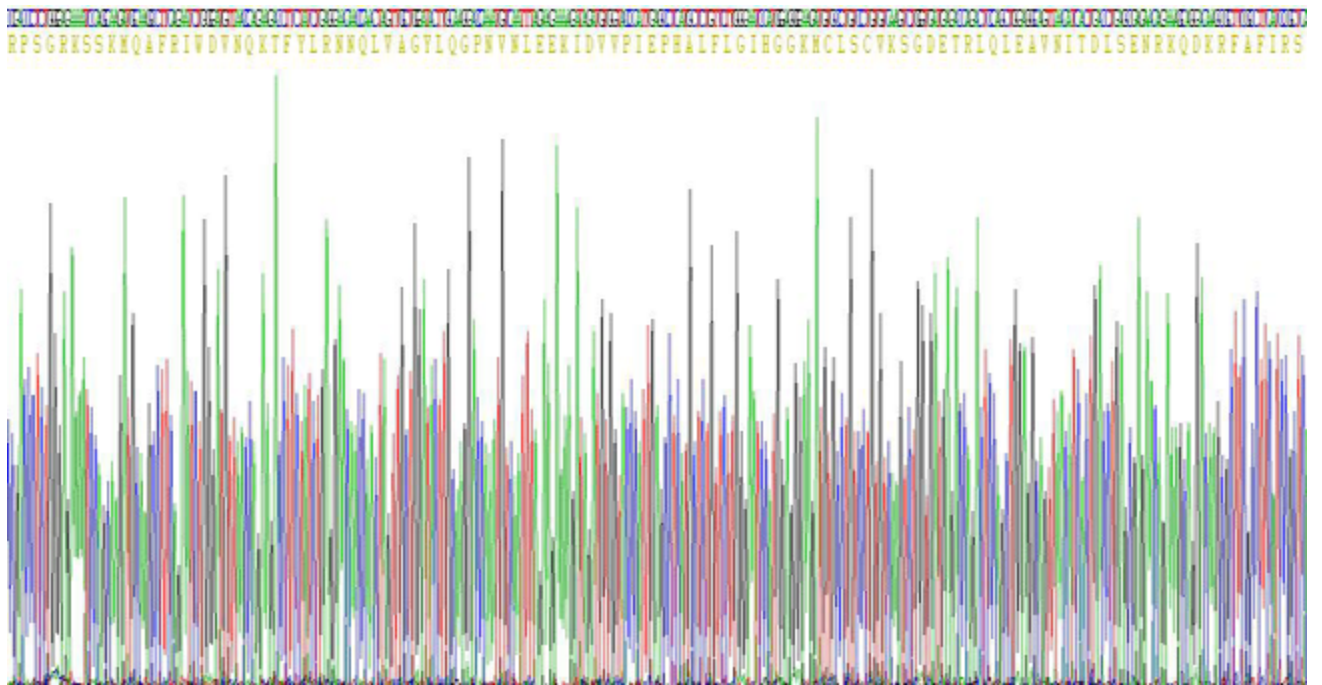


Figure. Gene Sequencing (extract)

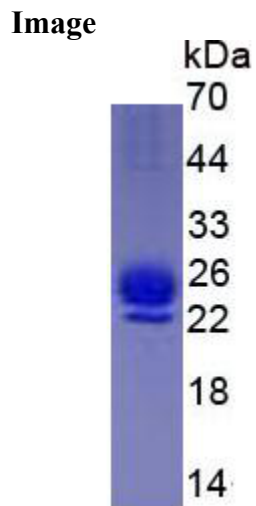
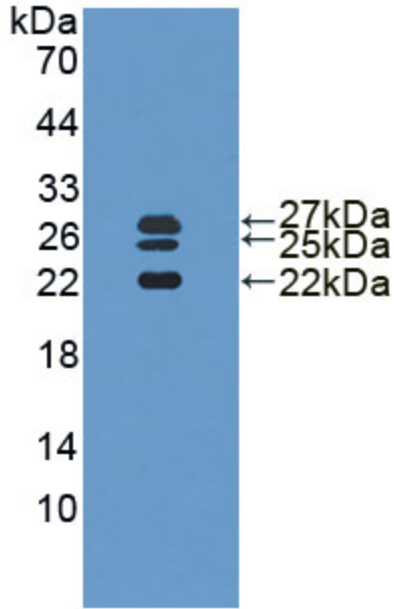


Figure. SDS-PAGE



Sample: Recombinant IL1RA, Human;
Antibody: Rabbit Anti-Human IL1RA Ab (PAA223Hu06)
Figure. Western Blot

[IMPORTANT NOTE]

The kit is designed for research use only, we will not be responsible for any issue if the kit was used in clinical diagnostic or any other procedures.