

# Active Interleukin 1 Receptor Antagonist (IL1RA) Instruction Manual

## SBPA103Mu01

**Mus musculus (Mouse)**

**Buffer Formulation**

20mM Tris, 150mM NaCl, pH8.0, containing 1mM EDTA, 1mM DTT, 0.01% SKL, 5% Trehalose and Proclin300.

**Traits**

Freeze-dried powder

**Purity**

> 95%

**Isoelectric Point**

8.5

**Applications**

Cell culture; Activity Assays.

### ACTIVITY TEST

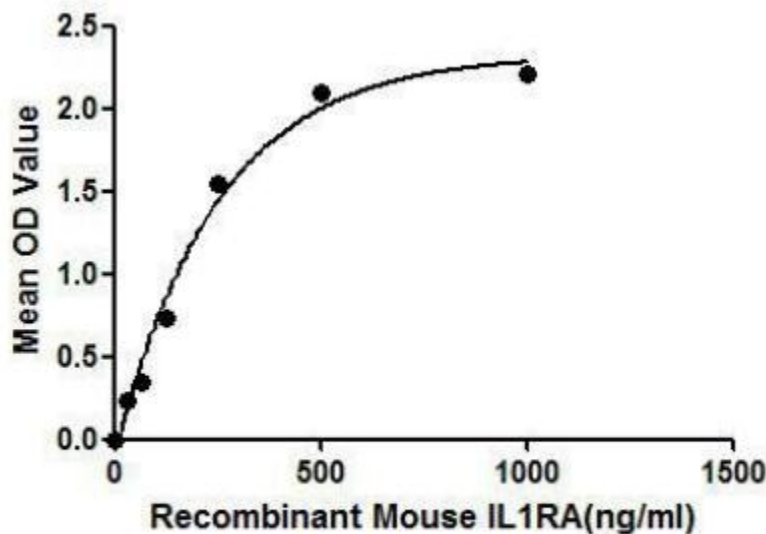


Figure 1. The binding activity of IL1RA with IL1R1.

IL1RA (interleukin-1 receptor antagonist) is an agent that binds to the cell surface interleukin-1 receptor (IL-1R), which would prevent IL-1 from intracellular signal transduction. Besides, mouse IL1R1 and rat IL1R1 share similarities in amino acid sequence with the identity of 85.6%. Thus, a binding ELISA assay was constructed to detect the association of recombinant mouse IL1RA with recombinant rat IL1R1. Briefly, IL1RA were diluted serially in PBS with 0.1%BSA (pH 7.4). Duplicate samples of

100uL were then transferred to IL1R1-coated microtiter wells and incubated for 2h at 37°C. Wells were washed with PBST and incubated for 1h with anti-IL1RA pAb, then aspirated and washed 3 times. After incubation with HRP labelled secondary antibody, wells were aspirated and washed 3 times. With the addition of substrate solution, wells were incubated 15-25 minutes at 37°C. Finally, add 50µL stop solution to the wells and read at 450nm immediately. The binding activity of IL1RA with IL1R1 was shown in Figure 1 and this effect was in a dose dependent manner.

## USAGE

Reconstitute in 20mM Tris, 150mM NaCl (PH8.0) to a concentration of 0.1-1.0 mg/mL. Do not vortex.

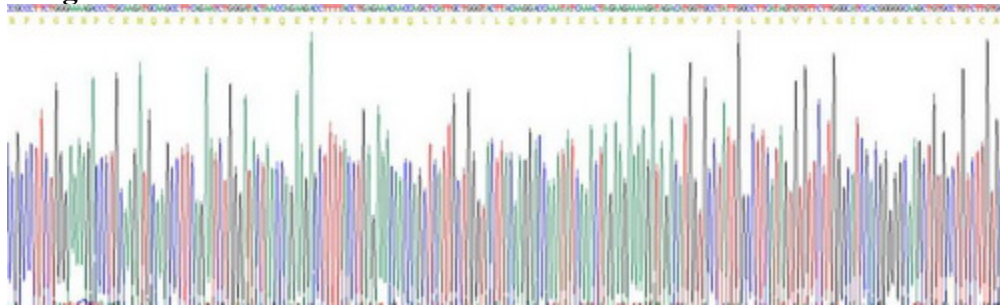
## STORAGE

Avoid repeated freeze/thaw cycles. Store at 2-8°C for one month. Aliquot and store at -80°C for 12 months.

## STABILITY

The thermal stability is described by the loss rate. The loss rate was determined by accelerated thermal degradation test, that is, incubate the protein at 37°C for 48h, and no obvious degradation and precipitation were observed. The loss rate is less than 5% within the expiration date under appropriate storage condition.

## Image



SDS-PAGE Image

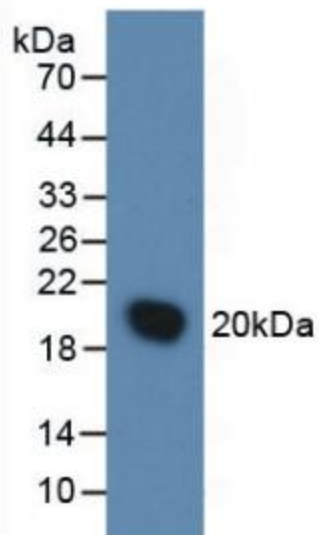


Figure. Western Blot; Sample: Recombinant IL1RA, Mouse.

**[IMPORTANT NOTE]**

The kit is designed for research use only, we will not be responsible for any issue if the kit was used in clinical diagnostic or any other procedures.