

Active Ribonuclease A (RNase A) Instruction Manual

SBPA110Hu01

Homo sapiens (Human)

Buffer Formulation

PBS, pH7.4, containing 0.01% SKL, 1mM DTT, 5% Trehalose and Proclin300.

Traits

Freeze-dried powder

Purity

> 90%

Isoelectric Point

8.8

Applications

Cell culture; Activity Assays.

ACTIVITY TEST

$$\text{Units/mg} = \frac{\Delta 260 \times 1000 \times N}{15 \text{ mg enzyme}}$$

1000=Absorbance conversion factor with 0.001;

N=Absorbance conversion factor;

15= Time of assay (inminutes)

The specific activity of recombinant human RNASEA is 1.3×10^4 U/mg

Ribonuclease A (RNASEA) is a member of the pancreatic-type of secretory ribonucleases, a subset of the ribonuclease A superfamily. RNASEA cleaves RNA on the 3' side of pyrimidine nucleotides. The protein acts to degrade ds-RNA over ss-RNA. The activity of recombinant human RNASEA measured by cleaving yeast RNA. One unit of the enzyme causes an increase in absorbance of 0.001 at 260 nm in 15 min when yeast RNA is hydrolyzed at 50°C and pH 5.0. Pipette 50ul of respective recombinant human RNASEA dilution into 100ul 0.1M sodium acetate buffer, pH 5.0, then add 150ul of 0.15mg/ml yeast RNA. The blank tube use 50ul ultrapure water instead of enzyme dilution. All the all tubes Incubate at 50°C for 15 minutes. Read A260 versus blank.

USAGE

Reconstitute in 10mM PBS (pH7.4) to a concentration of 0.1-1.0 mg/mL. Do not vortex.

STORAGE

Avoid repeated freeze/thaw cycles. Store at 2-8°C for one month. Aliquot and store at -80°C for 12 months.

STABILITY

The thermal stability is described by the loss rate. The loss rate was determined by accelerated thermal degradation test, that is, incubate the protein at 37°C for 48h, and no obvious degradation and precipitation were observed. The loss rate is less than 5% within the expiration date under appropriate storage condition.

Image

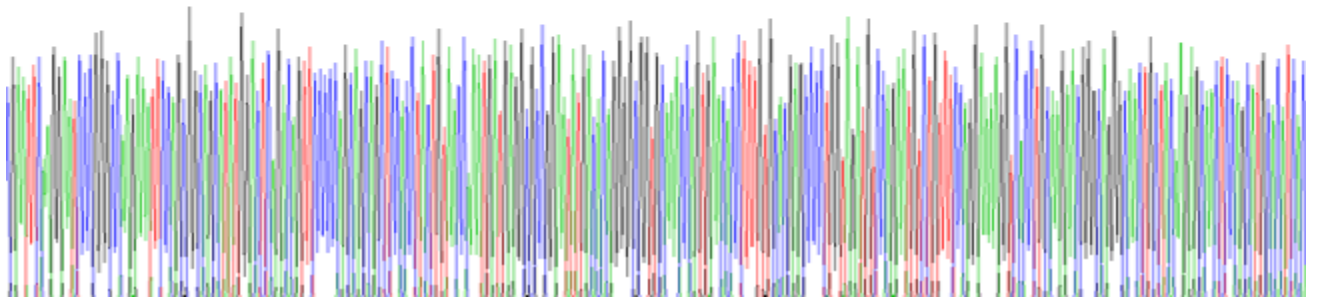


Figure. SDS-PAGE

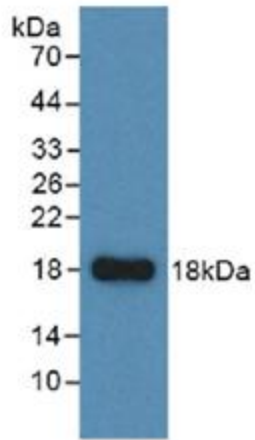


Figure. Western Blot

[IMPORTANT NOTE]

The kit is designed for research use only, we will not be responsible for any issue if the kit was used in clinical diagnostic or any other procedures.