

# Active Endothelin 1 (EDN1) Instruction Manual

**SBPA133Ra01**

**Rattus norvegicus (Rat)**

**Buffer Formulation**

20mM Tris, 150mM NaCl, pH8.0, containing 1mM EDTA, 1mM DTT, 0.01% SKL, 5% Trehalose and Proclin300.

**Traits**

Freeze-dried powder

**Purity**

> 95%

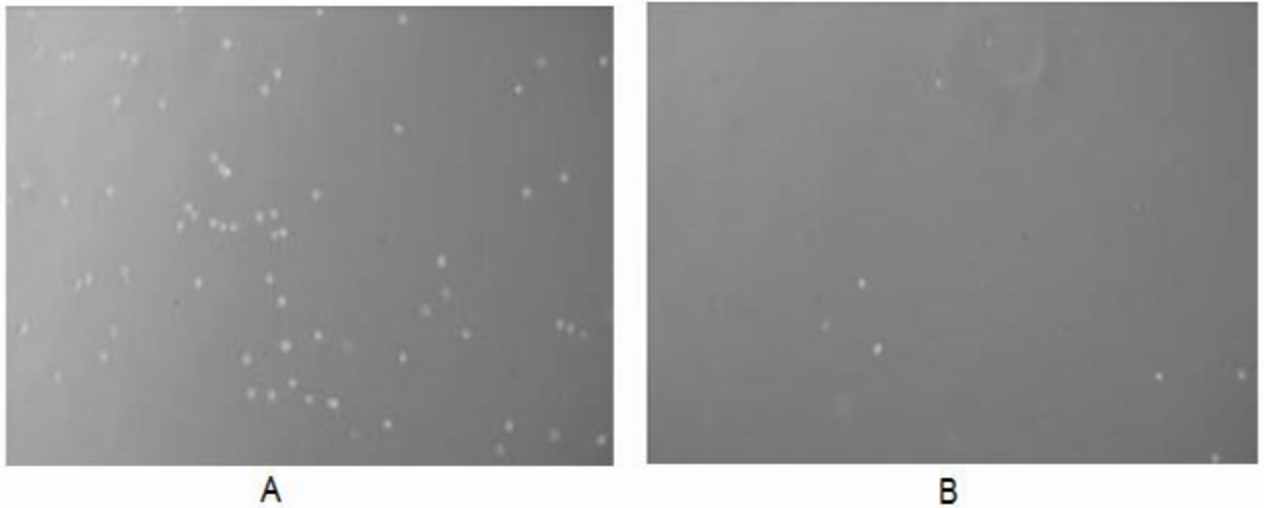
**Isoelectric Point**

9.7

**Applications**

Cell culture; Activity Assays.

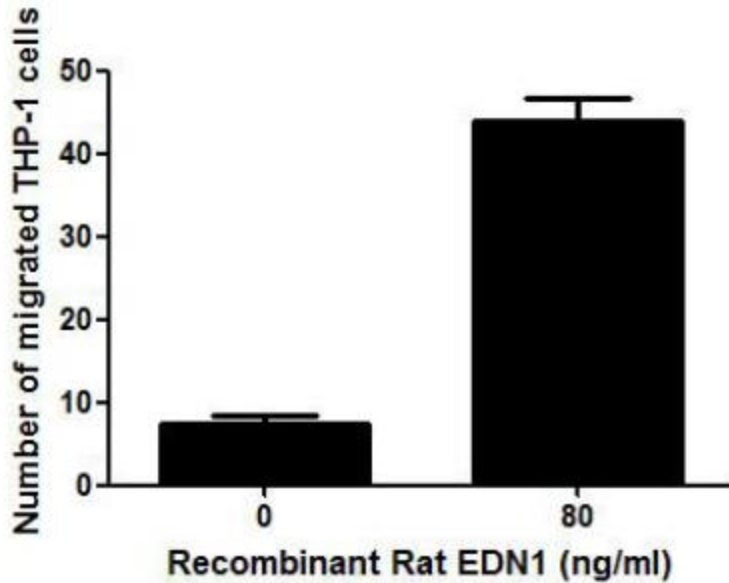
**ACTIVITY TEST**



**Figure 1. The chemotactic effect of EDN1 on THP1 cells.**

**(A) THP-1 cells were seeded into the upper chambers and serum free RPMI 1640 with 80ng/mL EDN1 was added in lower chamber, then cells in lower chamber were observed at low magnification ( $\times 100$ ) after incubation for 3h;**

**(B) THP-1 cells were seeded into the upper chambers and serum free RPMI 1640 without EDN1 was added in lower chamber, then cells in lower chamber were observed at low magnification ( $\times 100$ ) after incubation for 3h.**



**Figure 2. The chemotactic effect of EDN1 on THP-1 cells.**

## **USAGE**

Reconstitute in 20mM Tris, 150mM NaCl (pH8.0) to a concentration of 0.1-1.0 mg/mL. Do not vortex.

## **STORAGE**

Avoid repeated freeze/thaw cycles. Store at 2-8°C for one month. Aliquot and store at -80°C for 12 months.

## **STABILITY**

The thermal stability is described by the loss rate. The loss rate was determined by accelerated thermal degradation test, that is, incubate the protein at 37°C for 48h, and no obvious degradation and precipitation were observed. The loss rate is less than 5% within the expiration date under appropriate storage condition.

## **Image**

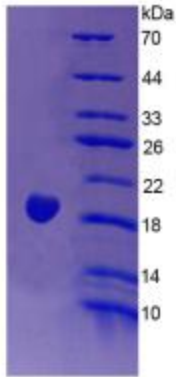


Figure. SDS-PAGE

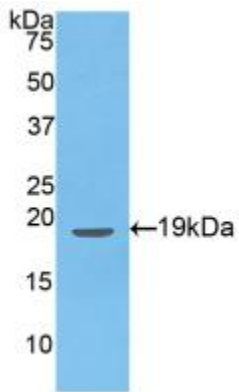


Figure. Western Blot; Sample: Recombinant EDN1, Human.

**[IMPORTANT NOTE]**

The kit is designed for research use only, we will not be responsible for any issue if the kit was used in clinical diagnostic or any other procedures.