

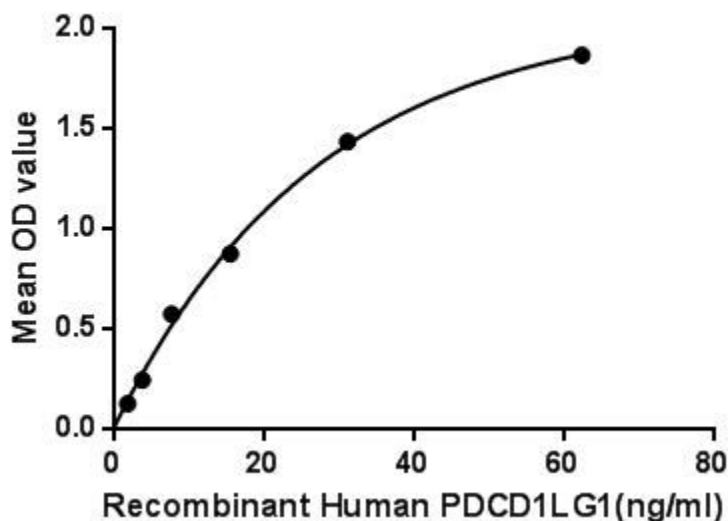
Active Programmed Cell Death Protein 1 Ligand 1 (PDL1) Instruction Manual

SBPA175Hu61

Homo sapiens (Human)

Buffer Formulation	PBS, pH7.4, containing 0.01% SKL, 5% Trehalose.
Traits	Freeze-dried powder
Purity	> 97%
Isoelectric Point	6.5
Applications	Cell culture; Activity Assays.

ACTIVITY TEST



Programmed Cell Death Protein 1 Ligand 1 (PDCD1LG1) also known as cluster of differentiation 274 (CD274) or B7 homolog 1 (B7-H1) is a 40kDa type 1 transmembrane protein that has been speculated to play a major role in suppressing the immune system during particular events such as pregnancy, tissue allografts, autoimmune disease and other disease states such as hepatitis. Besides, Programmed Cell Death Protein 1 (PDCD1) has been identified as an interactor of PDCD1LG1, thus a binding ELISA assay was conducted to detect the interaction of recombinant human PDCD1LG1 and recombinant human PDCD1. Briefly, PDCD1LG1 were diluted serially in PBS, with

0.01% BSA (pH 7.4). Duplicate samples of 100uL were then transferred to PDCD1-coated microtiter wells and incubated for 2h at 37°C. Wells were washed with PBST and incubated for 1h with anti-PDCD1LG1 pAb, then aspirated and washed 3 times. After incubation with HRP labelled secondary antibody, wells were aspirated and washed 3 times. With the addition of substrate solution, wells were incubated 15-25 minutes at 37°C. Finally, add 50µL stop solution to the wells and read at 450nm immediately. The binding activity of PDCD1LG1 and PDCD1 was shown in Figure 1, and this effect was in a dose dependent manner.

Figure. The binding activity of PDCD1LG1 with PDCD1.

USAGE

Reconstitute in 10mM PBS (pH7.6) to a concentration of 0.1-1.0 mg/mL. Do not vortex.

STORAGE

Avoid repeated freeze/thaw cycles. Store at 2-8°C for one month. Aliquot and store at -80°C for 12 months.

STABILITY

The thermal stability is described by the loss rate. The loss rate was determined by accelerated thermal degradation test, that is, incubate the protein at 37°C for 48h, and no obvious degradation and precipitation were observed. The loss rate is less than 5% within the expiration date under appropriate storage condition.

Image

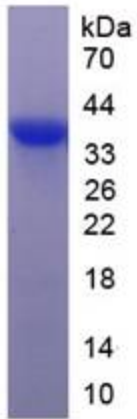


Figure. SDS-PAGE

Figure. Western Blot

[IMPORTANT NOTE]

The kit is designed for research use only, we will not be responsible for any issue if the kit was used in clinical diagnostic or any other procedures.