

Active Interleukin 10 Receptor Beta (IL10Rb) Instruction Manual

SBPB253Hu01

Homo sapiens (Human)

Buffer Formulation	PBS, pH7.4, containing 0.01% SKL, 5% Trehalose.
Traits	Freeze-dried powder
Purity	> 97%
Isoelectric Point	5.0
Applications	Cell culture; Activity Assays.

ACTIVITY TEST

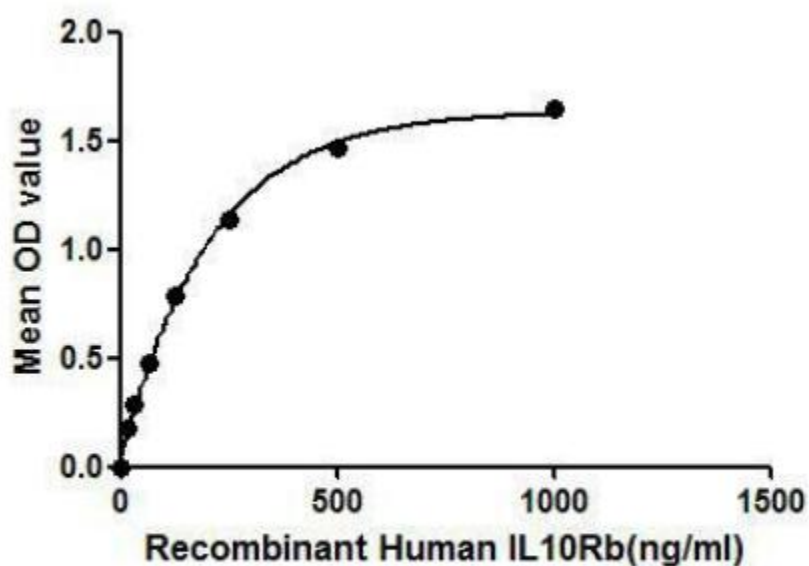


Figure 1. The binding activity of IL10Rb with IL10.

IL10Rb (Interleukin-10 receptor subunit beta) belongs to the cytokine receptor family. It is an accessory chain essential for the active interleukin 10 receptor complex, which is a cell surface receptor required for the activation of several cytokines, including IL10. Thus, a binding ELISA assay was conducted to detect the interaction of IL10Rb and IL10. Briefly, recombinant human IL10RB were diluted serially in PBS, with 0.01%BSA (pH 7.4). Duplicate samples of 100uL were then transferred to IL10-coated microtiter wells and incubated for 2h at 37°C. Wells were washed with PBST and incubated for 1h with anti-IL10Rb pAb, then aspirated and washed 3 times. After incubation with HRP labelled secondary antibody, wells were aspirated and washed 3 times. With the addition

of substrate solution, wells were incubated 15-25 minutes at 37°C. Finally, add 50µL stop solution to the wells and read at 450nm immediately. The binding activity of IL10Rb and IL10 was shown in Figure 1, and this effect was in a dose dependent manner.

USAGE

Reconstitute in 10mM PBS (pH7.4) to a concentration of 0.1-1.0 mg/mL. Do not vortex.

STORAGE

Avoid repeated freeze/thaw cycles. Store at 2-8°C for one month. Aliquot and store at -80°C for 12 months.

STABILITY

The thermal stability is described by the loss rate. The loss rate was determined by accelerated thermal degradation test, that is, incubate the protein at 37°C for 48h, and no obvious degradation and precipitation were observed. The loss rate is less than 5% within the expiration date under appropriate storage condition.

Image

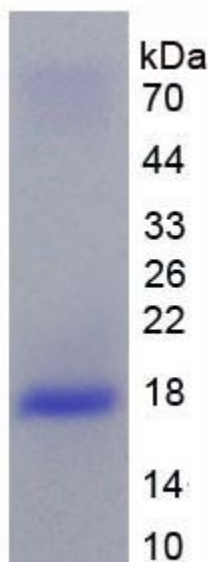


Figure. SDS-PAGE; Sample: Active recombinant IL10Rb, Human.

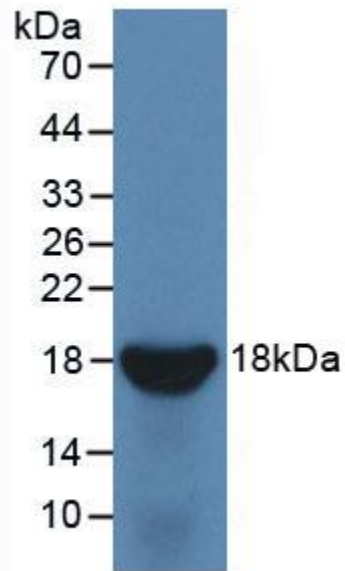


Figure. Western Blot; Sample: Recombinant IL10Rb, Human.

[IMPORTANT NOTE]

The kit is designed for research use only, we will not be responsible for any issue if the kit was used in clinical diagnostic or any other procedures.