

# Active Angiotensin I Converting Enzyme 2 (ACE2) Instruction Manual

**SBPB278Mu01**

**Mus musculus (Mouse)**

**Buffer Formulation**

20mM Tris, 150mM NaCl, pH8.0, containing 1mM EDTA, 1mM DTT, 0.01% SKL, 5% Trehalose and Proclin300.

**Traits**

Freeze-dried powder

**Purity**

> 90%

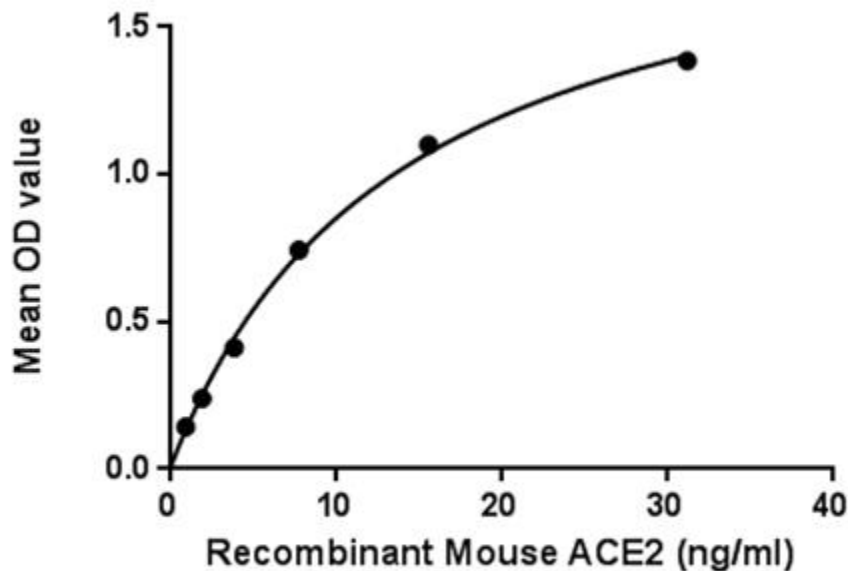
**Isoelectric Point**

6.0

**Applications**

Cell culture; Activity Assays.

**ACTIVITY TEST**



**Figure 1. The binding activity of ACE2 with S1**

Angiotensin-converting enzyme 2 (ACE2), as a transmembrane protein, serves as the main entry point into cells for some coronaviruses, including HCoV-NL63, SARS-CoV, and SARS-CoV-2. More specifically, the binding of the spike S1 protein of SARS-CoV and SARS-CoV-2 to the enzymatic domain of ACE2 on the surface of cells results in endocytosis and translocation of both the virus and the enzyme into endosomes located

within cells. Besides, recent studies show that spike (S) proteins of 2019-nCoV and SARS-CoV may use the same host cell receptor called angiotensin-converting enzyme 2 (ACE2) for entering into host cells, thus a binding ELISA assay was conducted to detect the interaction of recombinant mouse ACE2 and recombinant Spike glycoprotein(S1). Briefly, ACE2 were diluted serially in PBS, with 0.01% BSA (pH 7.4). Duplicate samples of 100µl were then transferred to S1-coated microtiter wells and incubated for 2h at 37°C. Wells were washed with PBST and incubated for 1h with anti-ACE2 pAb, then aspirated and washed 3 times. After incubation with HRP labelled secondary antibody, wells were aspirated and washed 3 times. With the addition of substrate solution, wells were incubated 15-25 minutes at 37°C. Finally, add 50µl stop solution to the wells and read at 450nm immediately. The binding activity of ACE2 and S1 was shown in Figure 1, and this effect was in a dose dependent manner.

## **USAGE**

Reconstitute in 20mM Tris, 150mM NaCl (pH8.0) to a concentration of 0.1-1.0 mg/mL. Do not vortex.

## **STORAGE**

Avoid repeated freeze/thaw cycles. Store at 2-8°C for one month. Aliquot and store at -80°C for 12 months.

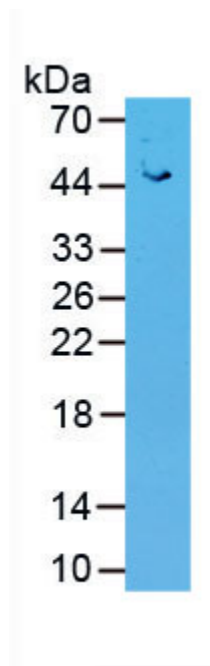
## **STABILITY**

The thermal stability is described by the loss rate. The loss rate was determined by accelerated thermal degradation test, that is, incubate the protein at 37°C for 48h, and no obvious degradation and precipitation were observed. The loss rate is less than 5% within the expiration date under appropriate storage condition.

## **Image**



Figure. SDS-PAGE



WB Image

**[IMPORTANT NOTE]**

The kit is designed for research use only, we will not be responsible for any issue if the kit was used in clinical diagnostic or any other procedures.

