

Active Interleukin 33 (IL33)

Instruction Manual

SBPB288Hu01

Homo sapiens (Human)

Buffer Formulation	PBS, pH7.4, containing 0.01% SKL, 5% Trehalose.
Traits	Freeze-dried powder
Purity	> 95%
Isoelectric Point	5.6
Applications	Cell culture; Activity Assays.

ACTIVITY TEST

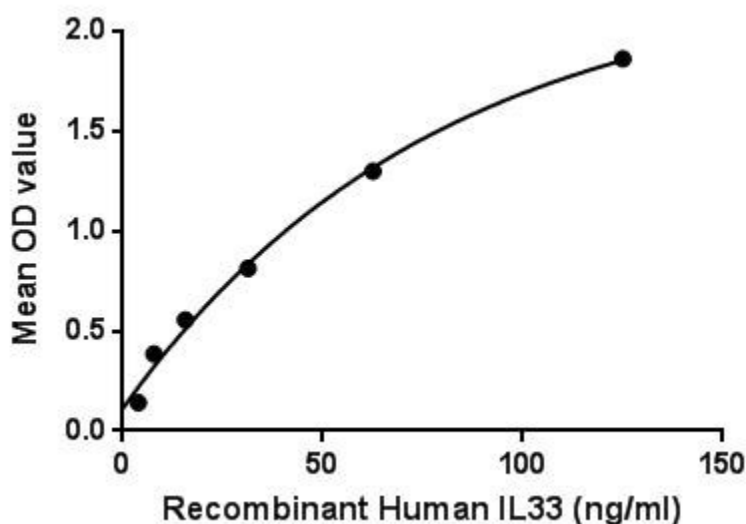


Figure. The binding activity of IL33 with IL1RL1.

Interleukin 33 is a member of the IL-1 family that potently drives production of T helper-2 (Th2)-associated cytokines. IL33 is a ligand for ST2 (IL1RL1), an IL-1 family receptor that is highly expressed on Th2 cells, mast cells and group 2 innate lymphocytes. IL-33 is expressed by a wide variety of cell types, including fibroblasts, mast cells, dendritic cells, macrophages, osteoblasts, endothelial cells, and epithelial cells. Besides, Interleukin 1 Receptor Like Protein 1 (IL1RL1) has been identified as an interactor of IL33, thus a binding ELISA assay was conducted to detect the interaction of recombinant human IL33 and recombinant human IL1RL1. Briefly, IL33 were diluted serially in PBS, with 0.01% BSA (pH 7.4). Duplicate samples of 100uL were then transferred to IL1RL1-coated microtiter wells and incubated for 2h at 37°C. Wells were washed with PBST and incubated for 1h with anti-IL33pAb, then aspirated and washed 3 times. After incubation

with HRP labelled secondary antibody, wells were aspirated and washed 3 times. With the addition of substrate solution, wells were incubated 15-25 minutes at 37°C. Finally, add 50µL stop solution to the wells and read at 450nm immediately. The binding activity of IL33 and IL1RL1 was shown in Figure 1, and this effect was in a dose dependent manner.

USAGE

Reconstitute in 10mM PBS (pH7.4) to a concentration of 0.1-1.0 mg/mL. Do not vortex.

STORAGE

Avoid repeated freeze/thaw cycles. Store at 2-8°C for one month. Aliquot and store at -80°C for 12 months.

STABILITY

The thermal stability is described by the loss rate. The loss rate was determined by accelerated thermal degradation test, that is, incubate the protein at 37°C for 48h, and no obvious degradation and precipitation were observed. The loss rate is less than 5% within the expiration date under appropriate storage condition.

Image

ATGATCAGATGAGGCTGATGAGTTATTATGAGCTCAACACCCCTCAATGAACTAGCTGACGGGTTGATGGTAAAGTGAATGGTAAACCTGAGCTCAAAAGACTTCGATGCTATGCCAACACAGGAACTCTGCGACTCATACTGCAAAAACATCCAGACGACCCCTCTTGTCC
SITDKVLLSYYESQHPSENESGDGVDGKWLHVTLSPTKDFWLHANNKKEHSVELHKCCXKPLPDQAFFVL

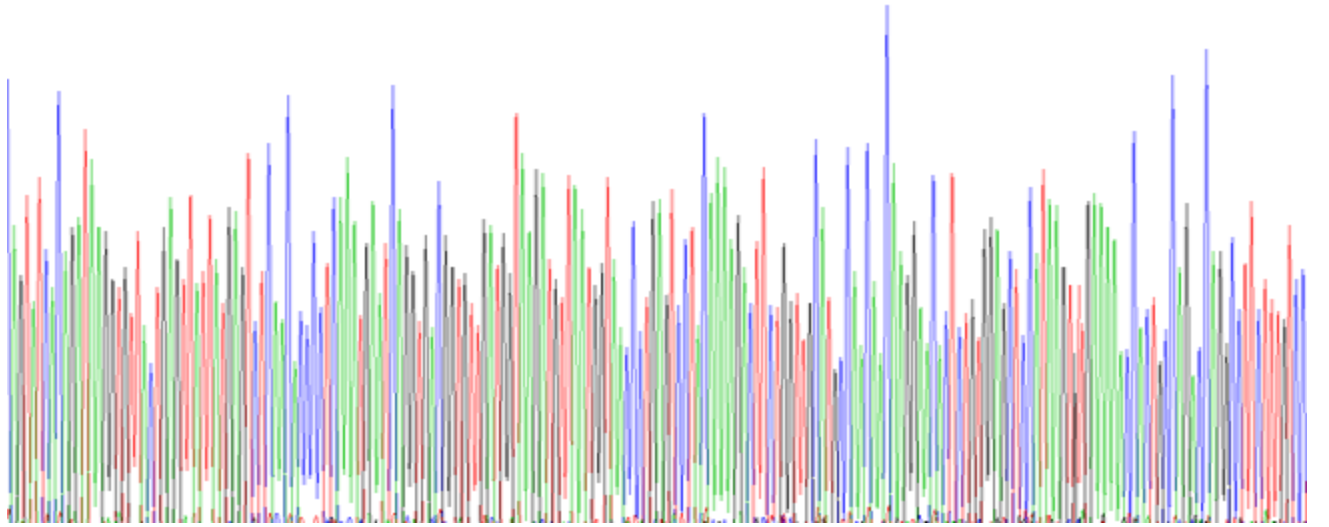


Figure. Gene Sequencing (Extract)

Image

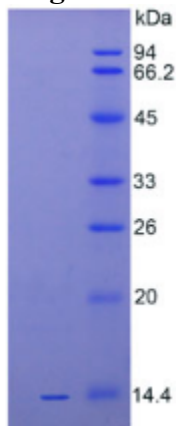


Figure. SDS-PAGE

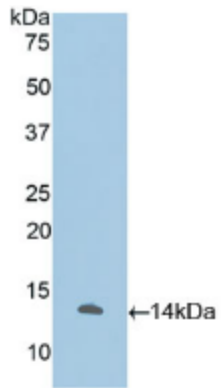


Figure. Western Blot

[IMPORTANT NOTE]

The kit is designed for research use only, we will not be responsible for any issue if the kit was used in clinical diagnostic or any other procedures.