

Active Interleukin 24 (IL24) Instruction Manual

SBPC043Hu01

Homo sapiens (Human)

Buffer Formulation

20mM Tris, 150mM NaCl, pH8.0, containing 1mM EDTA, 1mM DTT, 0.01% SKL, 5% Trehalose and Proclin300.

Traits

Freeze-dried powder

Purity

> 90%

Isoelectric Point

8.6

Applications

Cell culture; Activity Assays.

ACTIVITY TEST

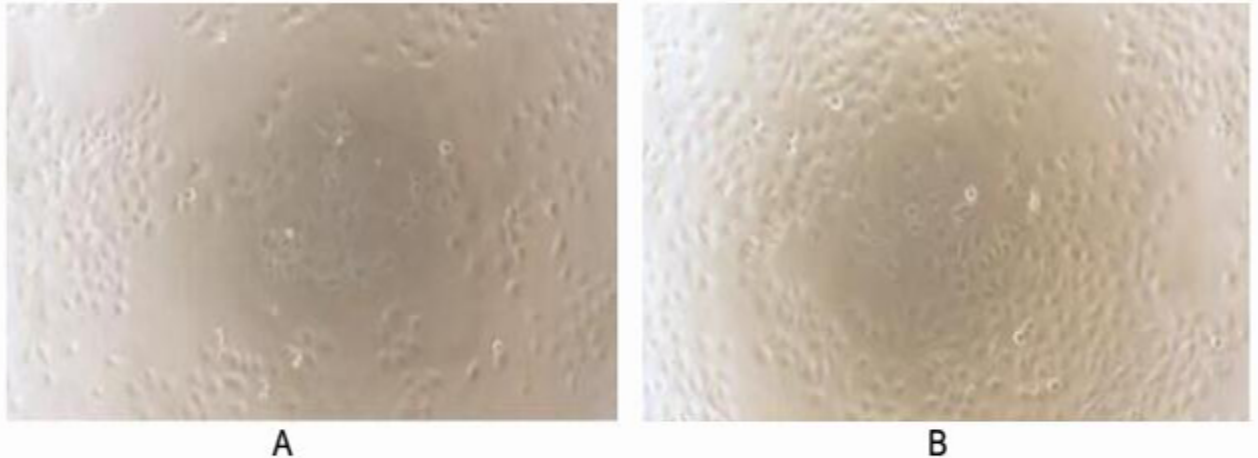


Figure 1. Inhibition of ECV-304 cells proliferation after stimulated with IL24.

(A) ECV-304 cells cultured in RPMI-1640, stimulated with 0.1ng/mL IL24 48h;

(B) Unstimulated ECV-304 cells cultured in serum-free RPMI-1640 for 48h.

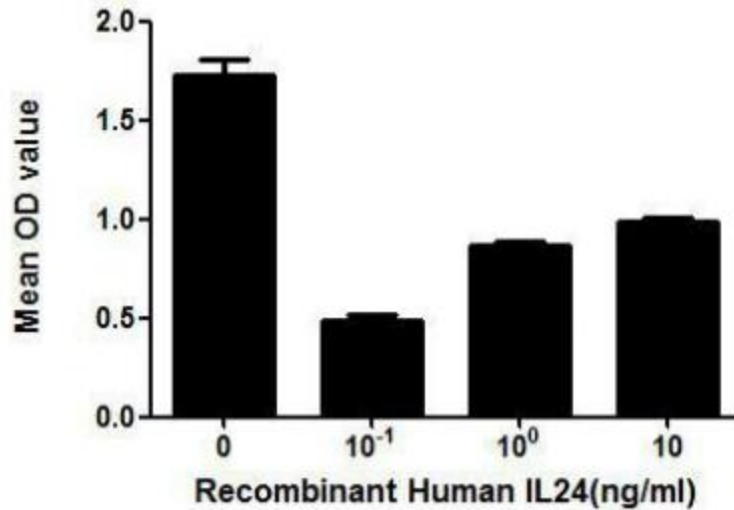


Figure 2. Inhibition of ECV-304 cells proliferation after stimulated with IL24.

IL24 (interleukin 24) is a cytokine that belongs to IL10 family. This protein can induce apoptosis selectively in various cancer cells, including ECV304. Thus, inhibition of cell proliferation assay of IL24 was conducted using ECV-304 cells. Briefly, ECV-304 cells were seeded into triplicate wells of 96-well plates at a density of 2,000 cells/well and allowed to attach overnight, then the medium was replaced with serum-free standard 1640 prior to the addition of various concentrations of IL24. After incubated for 48h, cells were observed by inverted microscope and cell proliferation was measured by Cell Counting Kit-8 (CCK-8). Briefly, 10 μ L of CCK-8 solution was added to each well of the plate, then the absorbance at 450nm was measured using a microplate reader after incubating the plate for 1-4 hours at 37 $^{\circ}$ C. Inhibition of ECV-304 cells proliferation after incubation with IIL24 for 48h observed by inverted microscope was shown in Figure 1. Cell viability was assessed by CCK-8 (Cell Counting Kit-8) assay after incubation with various concentrations of IL24 for 48h. The mean OD value of ECV-304 assessed by CCK-8 was shown in Figure 2. It was obvious that IL24 significantly decreased cell viability of ECV-304 cells.

USAGE

Reconstitute in 20mM Tris, 150mM NaCl (pH8.0) to a concentration of 0.1-1.0 mg/mL. Do not vortex.

STORAGE

Avoid repeated freeze/thaw cycles. Store at 2-8 $^{\circ}$ C for one month. Aliquot and store at -80 $^{\circ}$ C for 12 months.

STABILITY

The thermal stability is described by the loss rate. The loss rate was determined by accelerated thermal degradation test, that is, incubate the protein at 37°C for 48h, and no obvious degradation and precipitation were observed. The loss rate is less than 5% within the expiration date under appropriate storage condition.

Image

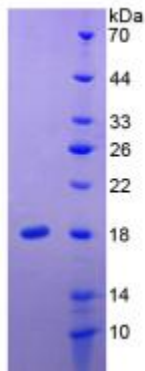


Figure. SDS-PAGE; Sample: Active recombinant IL24, Human.

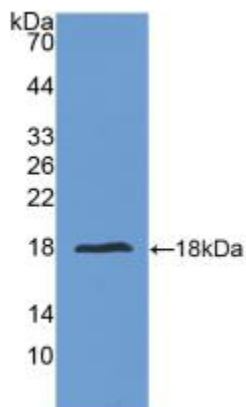


Figure. Western Blot ; Sample: Recombinant IL24, Human.

[IMPORTANT NOTE]

The kit is designed for research use only, we will not be responsible for any issue if the kit was used in clinical diagnostic or any other procedures.

