

Active Interleukin 29 (IL29) Instruction Manual

SBPC292Hu01

Homo sapiens (Human)

Buffer Formulation

20mM Tris, 150mM NaCl, pH8.0, containing 1mM EDTA, 1mM DTT, 0.01% SKL, 5% Trehalose and Proclin300.

Traits

Freeze-dried powder

Purity

> 90%

Isoelectric Point

9.3

Applications

Cell culture; Activity Assays.

ACTIVITY TEST

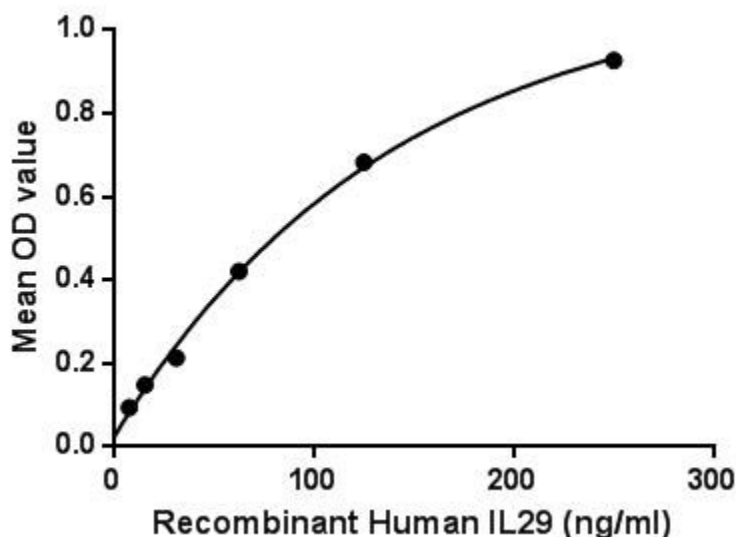


Figure. The binding activity of IL29 with ATP2B2.

Interleukin-29 (IL-29) is a member of the helical cytokine family and is a type III interferon. It is also known as IFN λ 1 and is highly similar in amino acid sequence to the IL-28, the other type III interferon. IL-29 plays an important role in host defenses against microbes and its gene is highly upregulated in cells infected with viruses. Besides, ATPase, Ca Transporting, Plasma Membrane 2 (ATP2B2) has been identified as an interactor of IL29, thus a binding ELISA assay was conducted to detect the interaction of recombinant human IL29 and recombinant human ATP2B2. Briefly, IL29 were diluted serially in PBS with 0.01% BSA (pH 7.4). Duplicate samples of 100 μ L were then transferred to ATP2B2-coated microtiter wells and incubated for 2h at 37 °C. Wells were

washed with PBST and incubated for 1h with anti-IL29 pAb, then aspirated and washed 3 times. After incubation with HRP labelled secondary antibody, wells were aspirated and washed 3 times. With the addition of substrate solution, wells were incubated 15-25 minutes at 37°C. Finally, add 50µL stop solution to the wells and read at 450nm immediately. The binding activity of IL29 and ATP2B2 was shown in Figure 1, and this effect was in a dose dependent manner.

USAGE

Reconstitute in 20mM Tris, 150mM NaCl (PH8.0) to a concentration of 0.1-1.0 mg/mL. Do not vortex.

STORAGE

Avoid repeated freeze/thaw cycles. Store at 2-8°C for one month. Aliquot and store at -80°C for 12 months.

STABILITY

The thermal stability is described by the loss rate. The loss rate was determined by accelerated thermal degradation test, that is, incubate the protein at 37°C for 48h, and no obvious degradation and precipitation were observed. The loss rate is less than 5% within the expiration date under appropriate storage condition.

Image

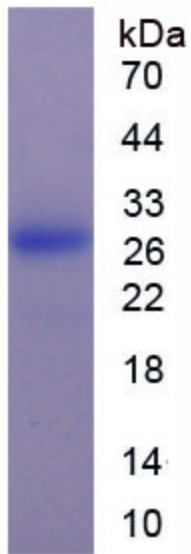


Figure. SDS-PAGE

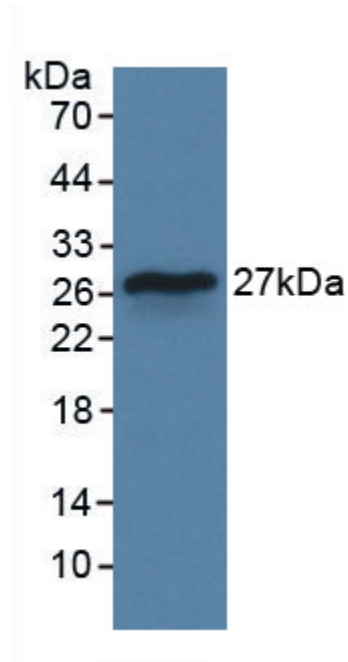


Figure. Western Blot

[IMPORTANT NOTE]

The kit is designed for research use only, we will not be responsible for any issue if the kit was used in clinical diagnostic or any other procedures.

