

Active Fibroblast Growth Factor 21 (FGF21) Instruction Manual

SBPC325Hu61

Homo sapiens (Human)

Buffer Formulation	PBS, pH7.4, containing 0.01% SKL, 5% Trehalose.
Traits	Freeze-dried powder
Purity	> 90%
Isoelectric Point	5.5
Applications	Cell culture; Activity Assays.

ACTIVITY TEST

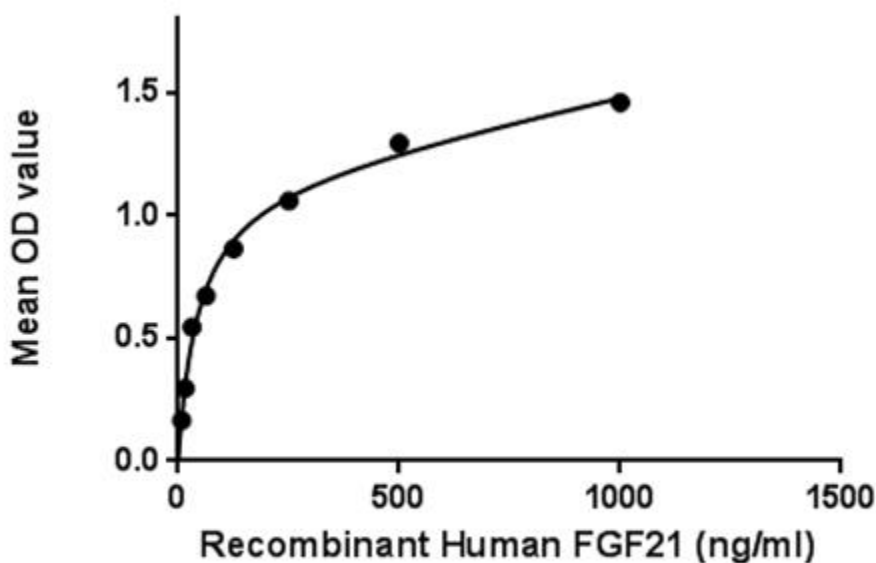


Figure 1. The binding activity of FGF21 with KLb

Fibroblast growth factor 21(FGF21) is a protein that in mammals is encoded by the FGF21 gene. The protein encoded by this gene is a member of the fibroblast growth factor (FGF) family and specifically a member of the endocrine subfamily which includes FGF23 and FGF15/19. FGF21 is the primary endogenous agonist of the FGF21 receptor, which is composed of the co-receptors FGF receptor 1 and β -Klotho. Besides, Klotho Beta (KLb) has been identified as an interactor of FGF21, thus a binding ELISA assay was conducted to detect the interaction of recombinant human FGF21 and recombinant human KLb. Briefly, FGF21 were diluted serially in PBS, with 0.01% BSA (pH 7.4).

Duplicate samples of 100µl then transferred to KLb-coated microtiter wells and incubated for 2h at 37°C. Wells were washed with PBST and incubated for 1h with anti-KLb pAb, then aspirated and washed 3 times. After incubation with HRP labelled secondary antibody, wells were aspirated and washed 3 times. With the addition of substrate solution, wells were incubated 15-25 minutes at 37°C. Finally, add 50µl stop solution to the wells and read at 450nm immediately. The binding activity of KLb and FGF21 was shown in Figure 1, and this effect was in a dose dependent manner.

USAGE

Reconstitute in 10mM PBS (pH7.4) to a concentration of 0.1-1.0 mg/mL. Do not vortex.

STORAGE

Avoid repeated freeze/thaw cycles. Store at 2-8°C for one month. Aliquot and store at -80°C for 12 months.

STABILITY

The thermal stability is described by the loss rate. The loss rate was determined by accelerated thermal degradation test, that is, incubate the protein at 37°C for 48h, and no obvious degradation and precipitation were observed. The loss rate is less than 5% within the expiration date under appropriate storage condition.

Image

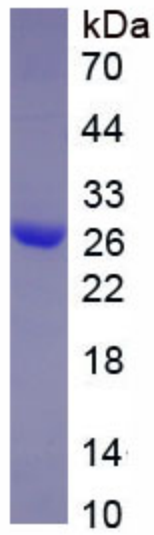


Figure. SDS-PAGE

[IMPORTANT NOTE]

The kit is designed for research use only, we will not be responsible for any issue if the kit was used in clinical diagnostic or any other procedures.