

Active Cytochrome P450 1A1 (CYP1A1) Instruction Manual

SBPD339Ra01

Rattus norvegicus (Rat)

Buffer Formulation

20mM Tris, 150mM NaCl, pH8.0, containing 1mM EDTA, 1mM DTT, 0.01% SKL, 5% Trehalose and Proclin300.

Traits

Freeze-dried powder

Purity

> 95%

Isoelectric Point

6.8

Applications

Cell culture; Activity Assays.

ACTIVITY TEST

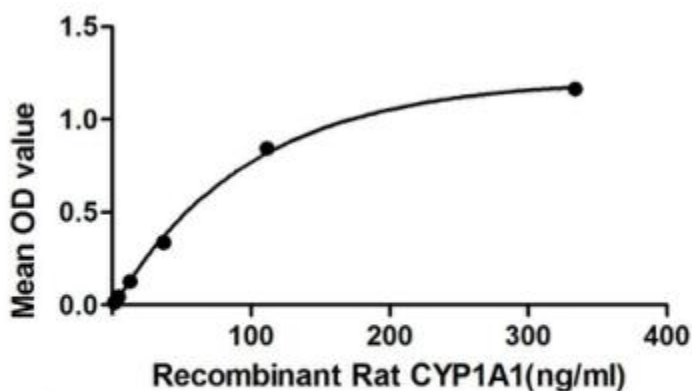


Figure 1. The binding activity of CYP1A1 with HSPA4

Cytochrome P450 1A1 (CYP1A1) is a member of Cytochromes P450 superfamily of enzymes. Cytochromes P450 are a group of heme-thiolate monooxygenases. It oxidizes a variety of structurally unrelated compounds, including steroids, fatty acids, and xenobiotics. CYP1A1 is also known as AHH (aryl hydrocarbon hydroxylase). It is involved in the metabolic activation of aromatic hydrocarbons (polycyclic aromatic hydrocarbons, PAH). Besides, Heat Shock 70kDa Protein 4 (HSPA4) has been identified as an interactor of CYP1A1, thus a binding ELISA assay was conducted to detect the interaction of recombinant rat CYP1A1 and recombinant rat HSPA4. Briefly, CYP1A1 were diluted serially in PBS, with 0.01% BSA (pH 7.4). Duplicate samples of 100uL were then transferred to HSPA4-coated microtiter wells and incubated for 2h at 37°C. Wells were washed with PBST and incubated for 1h with anti-CYP1A1 pAb, then aspirated and washed 3 times. After incubation with HRP labelled secondary antibody,

wells were aspirated and washed 3 times. With the addition of substrate solution, wells were incubated 15-25 minutes at 37°C. Finally, add 50µL stop solution to the wells and read at 450nm immediately. The binding activity of of CYP1A1 and HSPA4 was shown in Figure 1, and this effect was in a dose dependent manner.

USAGE

Reconstitute in 20mM Tris, 150mM NaCl (pH8.0) to a concentration of 0.1-1.0 mg/mL. Do not vortex.

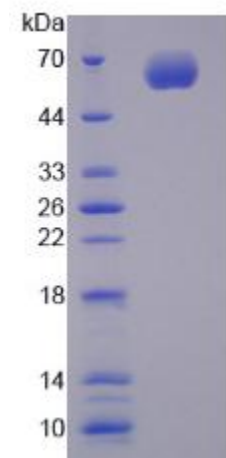
STORAGE

Avoid repeated freeze/thaw cycles. Store at 2-8°C for one month. Aliquot and store at -80°C for 12 months.

STABILITY

The thermal stability is described by the loss rate. The loss rate was determined by accelerated thermal degradation test, that is, incubate the protein at 37°C for 48h, and no obvious degradation and precipitation were observed. The loss rate is less than 5% within the expiration date under appropriate storage condition.

Image



SDS-PAGE Image

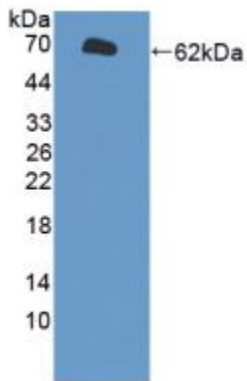


Figure. Western Blot; Sample: Recombinant CYP1A1, Rat.

[IMPORTANT NOTE]

The kit is designed for research use only, we will not be responsible for any issue if the kit was used in clinical diagnostic or any other procedures.