

# Active Interleukin 17D (IL17D) Instruction Manual

**SBPD342Hu01**

**Homo sapiens (Human)**

**Buffer Formulation**

20mM Tris, 150mM NaCl, pH8.0, containing 1mM EDTA, 1mM DTT, 0.01% SKL, 5% Trehalose and Proclin300.

**Traits**

Freeze-dried powder

**Purity**

> 90%

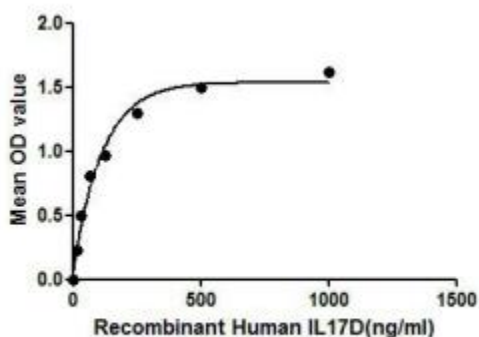
**Isoelectric Point**

9.1

**Applications**

Cell culture; Activity Assays.

## ACTIVITY TEST



**Figure 1. The binding activity of IL17D with IL17RB.**

IL17D (Interleukin-17D) belongs to the IL17 (interleukin 17) family, which includes six members (IL-17, IL-17B through IL-17F). IL17D is reported to induce the expression of IL6, CXCL8/IL8, and CSF2/GM-CSF from endothelial cells. IL17 family members share some similarities in AA sequence and structure, thus, a binding ELISA assay was constructed to detect the association of recombinant human IL17D with recombinant human IL17RB. Briefly, IL17D were diluted serially in PBS with 0.1%BSA (pH 7.4). Duplicate samples of 100uL were then transferred to IL17RB-coated microtiter wells and incubated for 2h at 37°C. Wells were washed with PBST and incubated for 1h with anti-IL17D pAb, then aspirated and washed 3 times. After incubation with HRP labelled secondary antibody, wells were aspirated and washed 3 times. With the addition of substrate solution, wells were incubated 15-25 minutes at 37°C. Finally, add 50µL stop solution to the wells and read at 450nm immediately. The binding activity of IL17D with IL17RB was shown in Figure 1 and this effect was in a dose dependent manner.

## USAGE

Reconstitute in 20mM Tris, 150mM NaCl (PH8.0) to a concentration of 0.1-1.0 mg/mL. Do not vortex.

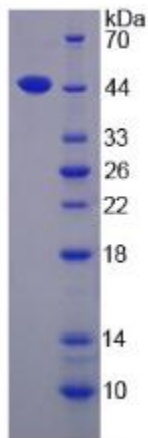
## STORAGE

Avoid repeated freeze/thaw cycles. Store at 2-8°C for one month. Aliquot and store at -80°C for 12 months.

## STABILITY

The thermal stability is described by the loss rate. The loss rate was determined by accelerated thermal degradation test, that is, incubate the protein at 37°C for 48h, and no obvious degradation and precipitation were observed. The loss rate is less than 5% within the expiration date under appropriate storage condition.

## Image



SDS-PAGE Image

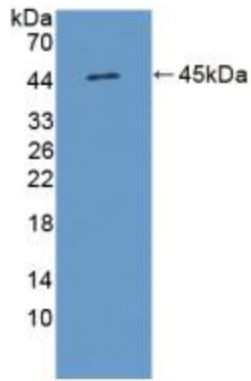


Figure. Western Blot; Sample: Recombinant IL17D, Human.

**[IMPORTANT NOTE]**

The kit is designed for research use only, we will not be responsible for any issue if the kit was used in clinical diagnostic or any other procedures.