

Active Interleukin 1 Family, Member 9 (IL1F9) Instruction Manual

SBPL386Hu01

Homo sapiens (Human)

Buffer Formulation

20mM Tris, 150mM NaCl, pH8.0, containing 1mM EDTA, 1mM DTT, 0.01% SKL, 5% Trehalose and Proclin300.

Traits

Freeze-dried powder

Purity

> 90%

Isoelectric Point

6.3

Applications

Cell culture; Activity Assays.

ACTIVITY TEST

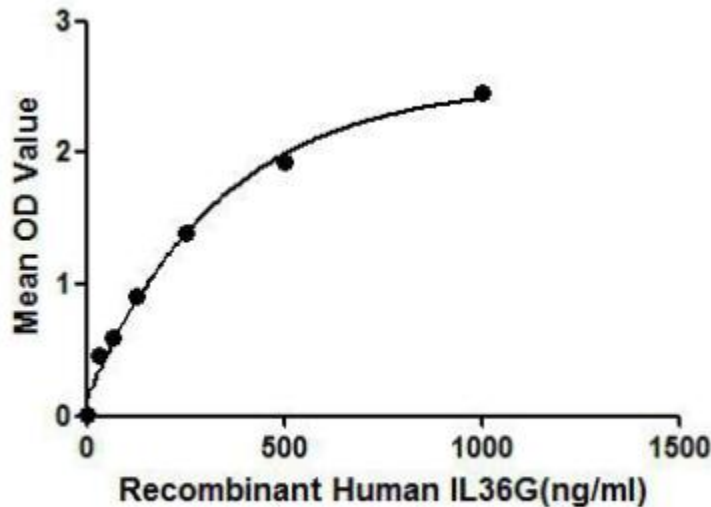


Figure 1. The binding activity of IL36G with IL1R1.

IL36G (Interleukin 36 gamma), also known as IL-1F9 and IL-1H1 is a member of the IL-1 family. The receptor for IL36 gamma is reported to be a combination of IL-1 R6/IL-1 Rrp2 and IL-1 R3/IL-1 R AcP. Thus we have conducted a binding ELISA assay to detect the interaction of recombinant human IL36G with recombinant human IL1R1. Briefly, IL36G were diluted serially in PBS, with 0.01%BSA (pH 7.4). Duplicate samples of 100uL were then transferred to IL1R1-coated microtiter wells and incubated for 2h at 37°C. Wells were washed with PBST and incubated for 1h with anti-IL1R1 pAb, then aspirated and washed 3 times. After incubation with HRP labelled secondary antibody, wells were aspirated and washed 3 times. With the addition of substrate solution, wells were incubated 15-25 minutes at 37°C. Finally, add 50µL stop solution to the wells and

read at 450nm immediately. The binding activity of IL36G with IL1R1 was shown in Figure 1 and this effect was in a dose dependent manner.

USAGE

Reconstitute in 20mM Tris, 150mM NaCl (PH8.0) to a concentration of 0.1-1.0 mg/mL. Do not vortex.

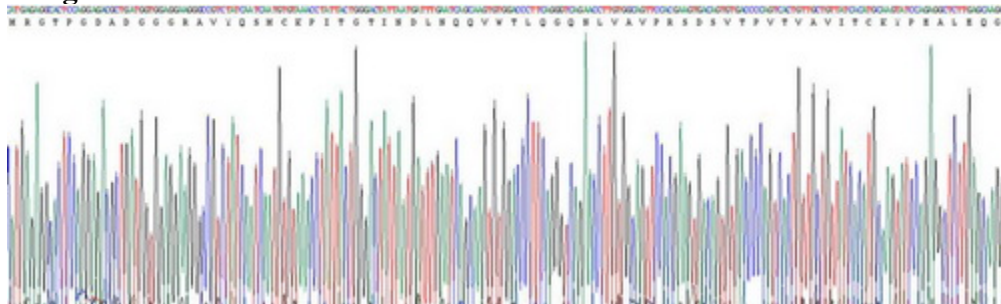
STORAGE

Avoid repeated freeze/thaw cycles. Store at 2-8°C for one month. Aliquot and store at -80°C for 12 months.

STABILITY

The thermal stability is described by the loss rate. The loss rate was determined by accelerated thermal degradation test, that is, incubate the protein at 37°C for 48h, and no obvious degradation and precipitation were observed. The loss rate is less than 5% within the expiration date under appropriate storage condition.

Image



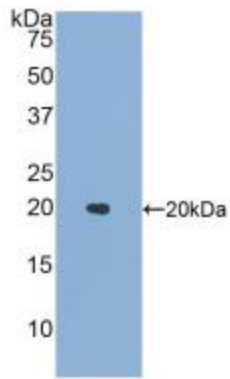


Figure. Western Blot; Sample: Recombinant IL1F9, Human.

[IMPORTANT NOTE]

The kit is designed for research use only, we will not be responsible for any issue if the kit was used in clinical diagnostic or any other procedures.