

# KLH Conjugated Amyloid Beta Peptide 1-42 (Ab1-42) Instruction Manual

**SDPA487Ra31**

**Rattus norvegicus (Rat)**

## FORMULA

AIIGLMVGGV VIA

SNKG

## USAGE

Reconstitute in PBS (pH7.4) to a concentration of 0.1-1.0 mg/mL. Do not vortex.

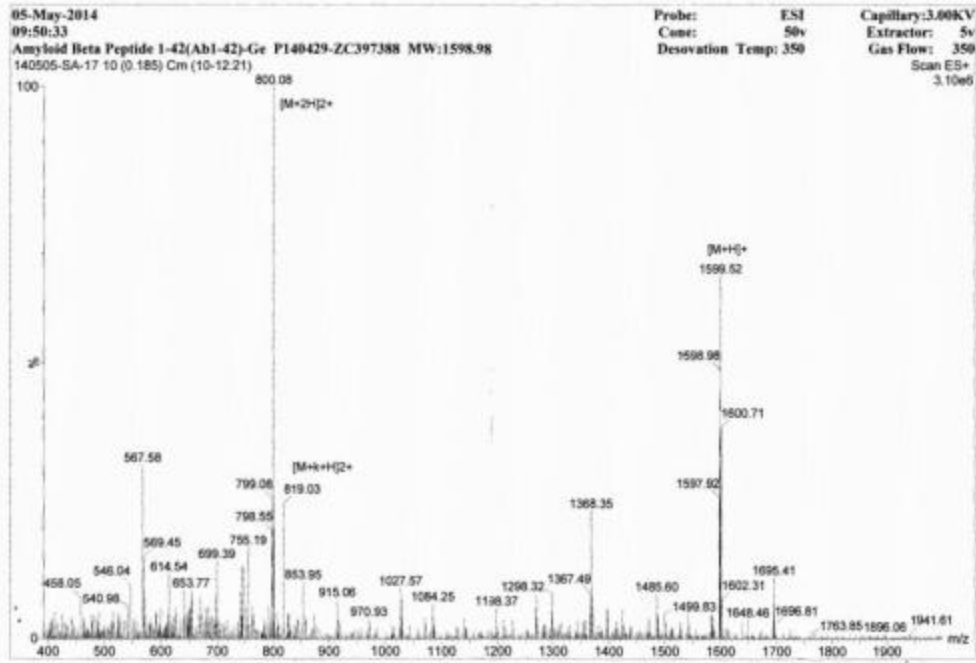
## STORAGE

Avoid repeated freeze/thaw cycles. Store at 2-8°C for one month. Aliquot and store at -80°C for 12 months.

## STABILITY

The thermal stability is described by the loss rate. The loss rate was determined by accelerated thermal degradation test, that is, incubate the protein at 37°C for 48h, and no obvious degradation and precipitation were observed. The loss rate is less than 5% within the expiration date under appropriate storage condition.

## Image



**[IMPORTANT NOTE]**

The kit is designed for research use only, we will not be responsible for any issue if the kit was used in clinical diagnostic or any other procedures.

<b>Source</b>	Protein Conjugation
<b>Original Molecular Mass</b>	n/a
<b>Buffer Formulation</b>	PBS, pH7.4.
<b>Traits</b>	Freeze-dried powder
<b>Purity</b>	> 90%
<b>Isoelectric Point</b>	n/a
<b>Applications</b>	Immunogen; SDS-PAGE; WB.