

# Eukaryotic Matrix Metalloproteinase 2 (MMP2) Instruction Manual

**SFPA067Hu62**

**Homo sapiens (Human)**

<b>Source</b>	Eukaryotic expression
<b>Host</b>	293F cell
<b>Endotoxin Level</b>	<1.0EU per 1µg (determined by the LAL method)
<b>Subcellular Location</b>	Membrane, Nucleus, Secreted, Cytoplasm
<b>Predicted Molecular Mass</b>	72.8kDa
<b>Accurate Molecular Mass</b>	70kDa(Analysis of differences refer to the manual)
<b>Residues &amp; Tags</b>	Ala30~Cys660 with N-terminal His Tag
<b>Buffer Formulation</b>	20mM Tris, 150mM NaCl, pH8.0, containing 1mM EDTA, 1mM DTT, 0.01% SKL, 5% Trehalose and Proclin300.
<b>Traits</b>	Freeze-dried powder
<b>Purity</b>	> 95%
<b>Isoelectric Point</b>	5.2
<b>Applications</b>	Positive Control; Immunogen; SDS-PAGE; WB.

## SEQUENCE

```

                                     A PSPIIKFPGD VAPKTDKELA
VQYLNTFYGC PKESCNLFVL KDTLKKMQKF FGLPQTGDLD QNTIETMRKP
RCGNPDVANY NFFPRKPKWD KNQITYRIIG YTPDLDPETV DDAFARAFQV
WSDVTPLRFS RIHDGEADIM INFGRWEHGD GYPFDGKDGL LAHAFAPGTG
VGGDSHFDDD ELWTLGEGQV VRVKYGNADG EYCKFPFLFN GKEYNSCTDT
GRSDGFLWCS TTYNFEKDGK YGFCPHEALF TMGGNAEQP CKFPFRFQGT
SYDSCTTEGR TDGYRWC GTT EDYDRDKKYG FCPETAMSTV GGNSEGAPCV
FPFTFLGNKY ESCTSAGRSD GKMWCATTAN YDDDRKWGFC PDQGYSLFLV
AAHEFGHAMG LEHSQDPGAL MAPIYTYTKN FRLSQDDIKG IQELYGASPD
IDLGTGPTPT LGPVTPEICK QDIVFDGIAQ IRGEIFFFKD RFIWRTVTPR
DKPMGPLLVA TFWEPEPEKI DAVYEAPQEE KAVFFAGNEY WIYSASTLER
GYPKPLTSLG LPPDVQRVDA AFNWSKNKKT YIFAGDKFWR YNEVKKKMDP
GFPKLIADAW NAIPDNLDAV VDLQGGGHSY FFKGAYYLKL ENQSLKSVKF
GSIKSDWLGC
```

## USAGE

Reconstitute in 20mM Tris, 150mM NaCl (pH8.0) to a concentration of 0.1-1.0 mg/mL. Do not vortex.

## STORAGE

Avoid repeated freeze/thaw cycles. Store at 2-8°C for one month. Aliquot and store at -80°C for 12 months.

## STABILITY

The thermal stability is described by the loss rate. The loss rate was determined by accelerated thermal degradation test, that is, incubate the protein at 37°C for 48h, and no obvious degradation and precipitation were observed. The loss rate is less than 5% within the expiration date under appropriate storage condition.

## Image

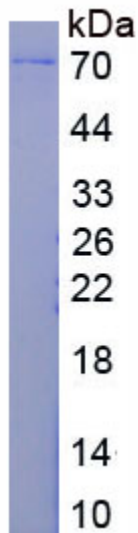


Figure. SDS-PAGE

## **[IMPORTANT NOTE]**

The kit is designed for research use only, we will not be responsible for any issue if the kit was used in clinical diagnostic or any other procedures.