

Native Immunoglobulin G1 (IgG1) Instruction Manual

SHPA402Hu01

Homo sapiens (Human)

FORMULA

USAGE

Reconstitute in NaH_2PO_4 and Na_2HPO_4 (pH7.4) to a concentration of 0.1-1.0 mg/mL. Do not vortex.

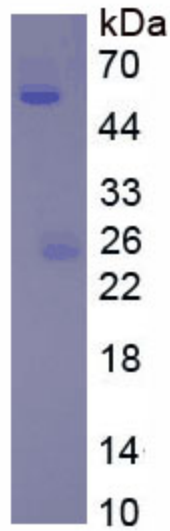
STORAGE

Avoid repeated freeze/thaw cycles. Store at 2-8°C for one month. Aliquot and store at -80°C for 12 months.

STABILITY

The thermal stability is described by the loss rate. The loss rate was determined by accelerated thermal degradation test, that is, incubate the protein at 37°C for 48h, and no obvious degradation and precipitation were observed. The loss rate is less than 5% within the expiration date under appropriate storage condition.

Image



SDS-PAGE Image

[IMPORTANT NOTE]

The kit is designed for research use only, we will not be responsible for any issue if the kit was used in clinical diagnostic or any other procedures.

Source	Natural extract
Subcellular Location	Secreted
Host	Human
Predicted Molecular Mass	146kDa
Accurate Molecular Mass	55kDa/25kDa(Analysis of differences refer to the manual)
Buffer Formulation	PBS, pH7.4, containing 0.01% SKL, 1mM DTT, 5% Trehalose and Proclin300.
Traits	Freeze-dried powder
Purity	> 95%
Isoelectric Point	8.6
Applications	Positive Control; Immunogen; SDS-PAGE; WB.