

# Recombinant Bone Morphogenetic Protein 2 (BMP2) Instruction Manual

## SIPA008Ca01

**Canis familiaris; Canine (Dog)**

<b>Source</b>	Prokaryotic expression
<b>Host</b>	E.coli
<b>Endotoxin Level</b>	<1.0EU per 1µg (determined by the LAL method)
<b>Subcellular Location</b>	n/a
<b>Predicted Molecular Mass</b>	21.1kDa
<b>Accurate Molecular Mass</b>	21kDa(Analysis of differences refer to the manual)
<b>Residues &amp; Tags</b>	Ser50~Gln218 (Accession # J9P401) with
<b>Buffer Formulation</b>	PBS, pH7.4, containing 0.01% SKL, 1mM DTT, 5% Trehalose and Proclin300.
<b>Traits</b>	Freeze-dried powder
<b>Purity</b>	> 95%
<b>Isoelectric Point</b>	n/a
<b>Applications</b>	Positive Control; Immunogen; SDS-PAGE; WB.

### USAGE

Reconstitute in PBS or others.

### STORAGE

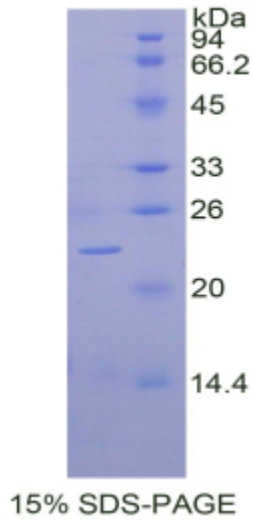
Avoid repeated freeze/thaw cycles. Store at 2-8°C for one month. Aliquot and store at -80°C for 12 months.

### STABILITY

The thermal stability is described by the loss rate. The loss rate was determined by accelerated thermal degradation test, that is, incubate the protein at 37°C for 48h, and no

obvious degradation and precipitation were observed. The loss rate is less than 5% within the expiration date under appropriate storage condition.

### Image



SDS-PAGE Image

### **[IMPORTANT NOTE]**

The kit is designed for research use only, we will not be responsible for any issue if the kit was used in clinical diagnostic or any other procedures.