

Recombinant Interleukin 13 (IL13)

Instruction Manual

SIPA039Ra01

Rattus norvegicus (Rat)

| | |
|---------------------------------|---|
| Source | Prokaryotic expression |
| Host | E.coli |
| Endotoxin Level | <1.0EU per 1µg (determined by the LAL method) |
| Subcellular Location | Secreted |
| Predicted Molecular Mass | 15.8kDa |
| Accurate Molecular Mass | 16kDa(Analysis of differences refer to the manual) |
| Residues & Tags | Pro22~His131 with N-terminal His Tag |
| Buffer Formulation | 100mMNaHCO ₃ , 500mMNaCl, pH8.3, containing 1mM EDTA, 1mM DTT, 0.01% SKL, 5% Trehalose and Proclin300. |
| Traits | Freeze-dried powder |
| Purity | > 95% |
| Isoelectric Point | 8.6 |
| Applications | Positive Control; Immunogen; SDS-PAGE; WB. |

SEQUENCE

PVRRSTSP VALRELIEEL SNITQDQKTS
LCNSSMVWSV DLTAGGFCAA LESLTNISSC NAIHRTQRIL NGLCNQKASD
VASSPPDTKI EVAQFISKLL NYSKQLFRYG H

USAGE

Reconstitute in ddH₂O to a concentration of 0.1-1.0 mg/mL. Do not vortex.

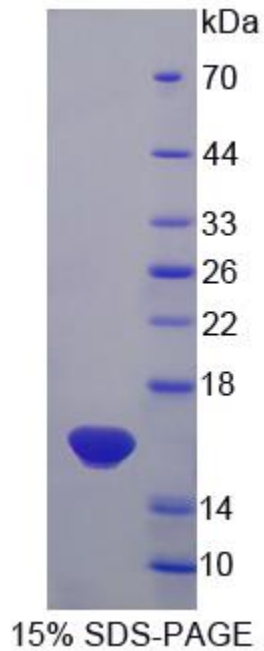
STORAGE

Avoid repeated freeze/thaw cycles. Store at 2-8°C for one month. Aliquot and store at -80°C for 12 months.

STABILITY

The thermal stability is described by the loss rate. The loss rate was determined by accelerated thermal degradation test, that is, incubate the protein at 37°C for 48h, and no obvious degradation and precipitation were observed. The loss rate is less than 5% within the expiration date under appropriate storage condition.

Image



SDS-PAGE Image

[IMPORTANT NOTE]

The kit is designed for research use only, we will not be responsible for any issue if the kit was used in clinical diagnostic or any other procedures.