

Recombinant Interleukin 17 (IL17)

Instruction Manual

SIPA042Ra01

Rattus norvegicus (Rat)

Source	Prokaryotic expression
Host	E.coli
Endotoxin Level	<1.0EU per 1µg (determined by the LAL method).
Subcellular Location	Secreted
Predicted Molecular Mass	18.7kDa
Accurate Molecular Mass	18kDa(Analysis of differences refer to the manual)
Residues & Tags	Ala18~Ser150 with N-terminal His Tag
Buffer Formulation	20mM Tris, 150mM NaCl, pH8.0, containing 1mM EDTA, 1mM DTT, 0.01% SKL, 5% Trehalose and Proclin300.
Traits	Freeze-dried powder
Purity	> 95%
Isoelectric Point	9.0
Applications	Positive Control; Immunogen; SDS-PAGE; WB.

SEQUENCE

```
AVL IPQSSVCPNA EANNFLQNVK VNLKVINSL  
SKASSRRPSD YLNRSTSPWT LSRNEDPDRY PSVIWEAQCR HQRCVNAEGK  
LDHMMNSVLI QQEILVLKRE PEKCPFTFRV EKMLVGVGCT CVSSIVRHAS
```

USAGE

Reconstitute in 20mM Tris, 150mM NaCl (pH8.0) to a concentration of 0.1-1.0 mg/mL.
Do not vortex.

STORAGE

Avoid repeated freeze/thaw cycles. Store at 2-8°C for one month. Aliquot and store at -80°C for 12 months.

STABILITY

The thermal stability is described by the loss rate. The loss rate was determined by accelerated thermal degradation test, that is, incubate the protein at 37°C for 48h, and no obvious degradation and precipitation were observed. The loss rate is less than 5% within the expiration date under appropriate storage condition.

Image

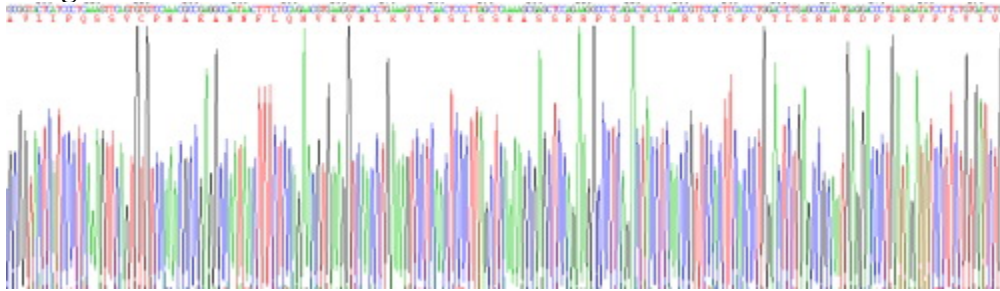


Figure. SDS-PAGE

[IMPORTANT NOTE]

The kit is designed for research use only, we will not be responsible for any issue if the kit was used in clinical diagnostic or any other procedures.