

Recombinant Interleukin 1 Receptor Type I (IL1R1) Instruction Manual

SIPA044Mu01

Mus musculus (Mouse)

Source	Prokaryotic expression
Host	E.coli
Endotoxin Level	<1.0EU per 1µg (determined by the LAL method)
Subcellular Location	Membrane, Secreted
Predicted Molecular Mass	41.1kDa
Accurate Molecular Mass	19/42kDa(Analysis of differences refer to the manual)
Residues & Tags	Leu20~Lys338 with N-terminal His Tag
Buffer Formulation	20mM Tris, 150mM NaCl, pH8.0, containing 1mM EDTA, 1mM DTT, 0.01% SKL, 5% Trehalose and Proclin300.
Traits	Freeze-dried powder
Purity	> 95%
Isoelectric Point	6.4
Applications	Positive Control; Immunogen; SDS-PAGE; WB.

SEQUENCE

```
      L EIDVCTEYPN QIVLFLSVNE IDIRKCPLTP
NKMHGDTIIW YKNSKTPIS ADRDSRIHQQ NEHLWFVPAK VEDSGYYYCI
VRNSTYCLKT KVTVTVLEND PGLCYSTQAT FPQRLHIAGD GSLVCPYVSY
FKDENNELPE VQWYKNCKPL LLDNVSFFGV KDKLLVRNVA EEHRGDYICR
MSYTFRGKQY PVTRVIQFIT IDENKRDRPV ILSRNETIE ADPGSMIQLI
CNVTGQFSDL VYWKWNGSEI EWNDPFLAED YQFVEHPSTK RKYTLITTLN
ISEVKSQFYR YPFICVVKNT NIFESAHVQL IYPVPDFK
```

USAGE

Reconstitute in 20mM Tris, 150mM NaCl (pH8.0) to a concentration of 0.1-1.0 mg/mL.
Do not vortex.

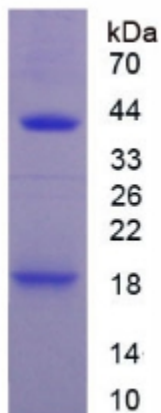
STORAGE

Avoid repeated freeze/thaw cycles. Store at 2-8°C for one month. Aliquot and store at -80°C for 12 months.

STABILITY

The thermal stability is described by the loss rate. The loss rate was determined by accelerated thermal degradation test, that is, incubate the protein at 37°C for 48h, and no obvious degradation and precipitation were observed. The loss rate is less than 5% within the expiration date under appropriate storage condition.

Image



SDS-PAGE Image

[IMPORTANT NOTE]

The kit is designed for research use only, we will not be responsible for any issue if the kit was used in clinical diagnostic or any other procedures.