

# Recombinant Neutrophil Elastase (NE) Instruction Manual

## SIPA096Ca01

**Canis familiaris; Canine (Dog)**

<b>Source</b>	Prokaryotic expression
<b>Host</b>	E.coli
<b>Endotoxin Level</b>	<1.0EU per 1µg (determined by the LAL method)
<b>Subcellular Location</b>	Secreted
<b>Predicted Molecular Mass</b>	27.04kDa
<b>Accurate Molecular Mass</b>	25kDa(Analysis of differences refer to the manual)
<b>Residues &amp; Tags</b>	Ile31~Arg248 with N-terminal His Tag
<b>Buffer Formulation</b>	100mMNaHCO <sub>3</sub> , 500mMNaCl, pH8.3, containing 1mM EDTA, 1mM DTT, 0.01% SKL, 5% Trehalose and Proclin300.
<b>Traits</b>	Freeze-dried powder
<b>Purity</b>	> 95%
<b>Isoelectric Point</b>	8.6
<b>Applications</b>	Positive Control; Immunogen; SDS-PAGE; WB.

## SEQUENCE

```
IVGGRPAQPH AWPFMVSLQR  
RGGHFCGGTL IAPNFVMSAA HCVDGLNFRS VVVVLGAHDL GERESTRQLF  
AVQRVFEFGF DPVRLVNDIV LLQLNGSATI NANVQVARLP AQNQGVGNGV  
QCLAMGWGQL GTAQPPPRIL QELNVTVVTT LCRRSNVCTL VPRRRAGICF  
GDSGGPLVCN GLIQGIDSFI RGSCASGFFP DAFAPVAQFV DWINSIIR
```

## USAGE

Reconstitute in ddH<sub>2</sub>O to a concentration of 0.1-1.0 mg/mL. Do not vortex.

## STORAGE

Avoid repeated freeze/thaw cycles. Store at 2-8°C for one month. Aliquot and store at -80°C for 12 months.

## **STABILITY**

The thermal stability is described by the loss rate. The loss rate was determined by accelerated thermal degradation test, that is, incubate the protein at 37°C for 48h, and no obvious degradation and precipitation were observed. The loss rate is less than 5% within the expiration date under appropriate storage condition.

### **Image**

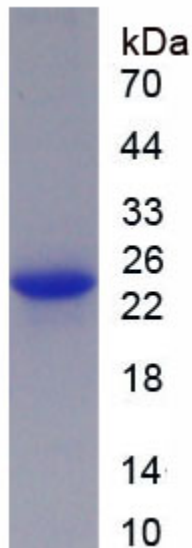


Figure. SDS-PAGE

### **[IMPORTANT NOTE]**

The kit is designed for research use only, we will not be responsible for any issue if the kit was used in clinical diagnostic or any other procedures.