

Recombinant Cathepsin A (CTSA) Instruction Manual

SIPA116Bo01

Bos taurus; Bovine (Cattle)

Source	Prokaryotic expression
Host	E.coli
Endotoxin Level	<1.0EU per 1µg (determined by the LAL method)
Subcellular Location	n/a
Predicted Molecular Mass	31.8KDa
Accurate Molecular Mass	n/a(Analysis of differences refer to the manual)
Residues & Tags	Leu171~Lys417 with
Buffer Formulation	PBS, pH7.4, containing 0.01% SKL, 1mM DTT, 5% Trehalose and Proclin300.
Traits	Freeze-dried powder
Purity	> 95%
Isoelectric Point	n/a
Applications	Positive Control; Immunogen; SDS-PAGE; WB.

USAGE

Reconstitute in PBS or others.

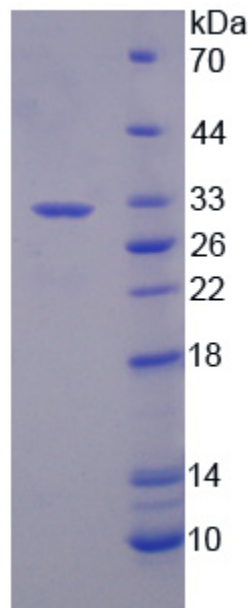
STORAGE

Avoid repeated freeze/thaw cycles. Store at 2-8°C for one month. Aliquot and store at -80°C for 12 months.

STABILITY

The thermal stability is described by the loss rate. The loss rate was determined by accelerated thermal degradation test, that is, incubate the protein at 37°C for 48h, and no obvious degradation and precipitation were observed. The loss rate is less than 5% within the expiration date under appropriate storage condition.

Image



15% SDS-PAGE
SDS-PAGE Image

[IMPORTANT NOTE]

The kit is designed for research use only, we will not be responsible for any issue if the kit was used in clinical diagnostic or any other procedures.