

Recombinant Lactoferrin (LTF)

Instruction Manual

SIPA172Ca01

Canis familiaris; Canine (Dog)

Source	Prokaryotic expression
Host	E.coli
Endotoxin Level	<1.0EU per 1µg (determined by the LAL method)
Subcellular Location	Secreted
Predicted Molecular Mass	42.1kDa
Accurate Molecular Mass	42kDa(Analysis of differences refer to the manual)
Residues & Tags	Cys28~Lys351 with N-terminal His Tag
Buffer Formulation	PBS, pH7.4, containing 1% SKL, 1mM DTT, 5% Trehalose
Traits	.
Purity	Freeze-dried powder
Isoelectric Point	> 95%
Applications	8.3
	Positive Control; Immunogen; SDS-PAGE; WB.

SEQUENCE

```
CTT SKAEAKKCSK FQVNMKKVGG  
PIVSCTRKAS RQECIQAIKA NKADAVTLDG GLVFEAGLEP NKLRPAAEV  
YGTQTKQQIH YYAVAIKKG TNFQLNQLQG VRSCHTGLGR SAGWNIPIGT  
LRPFLNWTGP PEPLLEAVAK FFSASCVPCA DGKQYPNLCR LCAGTEQNKC  
ACSSQEPYFG YSGAFKCLQD GAGDVAFVRD STVFENLPDK ADQDKYELLC  
LNNTRKPVDA FKDCHLARVP SHAVVARSVG GKEDLIWRL QKAQENFGKD  
KSSAFQLFGS PSGEKDLLFK DSAIGFLRIP SNIDSELYLG FNYINAIQSL  
K
```

USAGE

Reconstitute in PBS (pH7.4) to a concentration of 0.1-1.0 mg/mL. Do not vortex.

STORAGE

Avoid repeated freeze/thaw cycles. Store at 2-8°C for one month. Aliquot and store at -80°C for 12 months.

STABILITY

The thermal stability is described by the loss rate. The loss rate was determined by accelerated thermal degradation test, that is, incubate the protein at 37°C for 48h, and no obvious degradation and precipitation were observed. The loss rate is less than 5% within the expiration date under appropriate storage condition.

Image

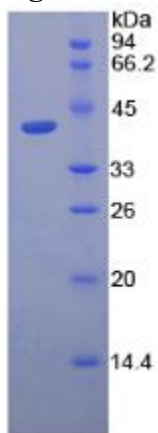


Figure. SDS-PAGE

[IMPORTANT NOTE]

The kit is designed for research use only, we will not be responsible for any issue if the kit was used in clinical diagnostic or any other procedures.