

Recombinant Lactoferrin (LTF)

Instruction Manual

SIPA172Cp01

Capra hircus; Caprine (Goat)

Source	Prokaryotic expression
Host	E.coli
Endotoxin Level	<1.0EU per 1µg (determined by the LAL method)
Subcellular Location	Secreted
Predicted Molecular Mass	37.6kDa
Accurate Molecular Mass	37kDa(Analysis of differences refer to the manual)
Residues & Tags	Val25~Glu352 with N-terminal His Tag
Buffer Formulation	20mM Tris, 150mM NaCl, pH8.0, containing 1mM EDTA, 1mM DTT, 0.01% SKL, 5% Trehalose and Proclin300.
Traits	Freeze-dried powder
Purity	> 97%
Isoelectric Point	8.9
Applications	Positive Control; Immunogen; SDS-PAGE; WB.

SEQUENCE

```
VRWCAI SLPEWSKCYQ WQRRMRKLG  
PSITCIRRTS ALECI  
RAIAG KNADAVTLDS GMVFEAGLDP YKLRPVAAEI  
YGTEKSPQTH YYAVAVVKKG SNFQLDQLQG QKSCHMGLGR SAGWNIPVGI  
LRPFLSWTES AEPLQGAVAR FFSASCVPCV DGKAYPNLCQ LCKGVGENKC  
ACSSQEPYFG YSGAFKCLQD GAGDVA  
FVKE TTVFENLPEK ADRDQYELLC  
LNNTRAPVDA FKECHLAQVP SHAVVARSVD GKENLIWELL RKAQEKFGKN  
KSQSFQLFGS PEGRRDLLFK DSALGFVRIP SKVDSALYLG SRYLTALKNL  
RE
```

USAGE

Reconstitute in 20mM Tris, 150mM NaCl (pH8.0) to a concentration of 0.1-1.0 mg/mL.
Do not vortex.

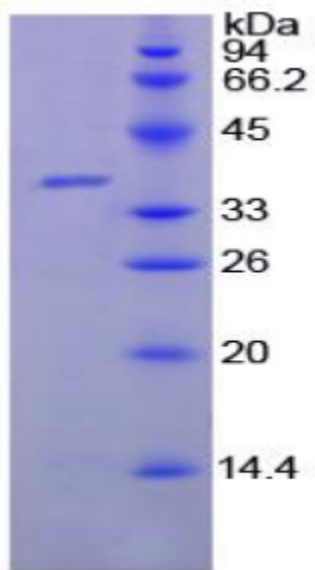
STORAGE

Avoid repeated freeze/thaw cycles. Store at 2-8°C for one month. Aliquot and store at -80°C for 12 months.

STABILITY

The thermal stability is described by the loss rate. The loss rate was determined by accelerated thermal degradation test, that is, incubate the protein at 37°C for 48h, and no obvious degradation and precipitation were observed. The loss rate is less than 5% within the expiration date under appropriate storage condition.

Image



15% SDS-PAGE

SDS-PAGE Image

[IMPORTANT NOTE]

The kit is designed for research use only, we will not be responsible for any issue if the kit was used in clinical diagnostic or any other procedures.