

Recombinant Ceruloplasmin (CP) Instruction Manual

SIPA316Ra01

Rattus norvegicus (Rat)

Source	Prokaryotic expression
Host	E.coli
Endotoxin Level	<1.0EU per 1µg (determined by the LAL method)
Subcellular Location	Secreted
Predicted Molecular Mass	25.5kDa
Accurate Molecular Mass	26kDa(Analysis of differences refer to the manual)
Residues & Tags	Ala872~Gly1059 with N-terminal His Tag
Buffer Formulation	20mM Tris, 150mM NaCl, pH8.0, containing 1mM EDTA, 1mM DTT, 0.01% SKL, 5% Trehalose and Proclin300.
Traits	Freeze-dried powder
Purity	> 90%
Isoelectric Point	6.2
Applications	Positive Control; Immunogen; SDS-PAGE; WB.

SEQUENCE

```
                AYYSTVDRV KDLYSGLIGP LIVCRKSYVK  
VFNPKKKMEF SLLFLVFDEN ESWYLDDNIN TYPDHPEKDN KDNEEFIESN  
KMHAIN GKMF GNLQGLTMHV GDEVNWWYVMA MGNEIDLHTV HFHGHFSFYK  
HRGIHSSDVF DFFPGTYQTL EMFPQTPGTW LLHCHVTDHI HAGMVTYTYV  
LPNQETKSG
```

USAGE

Reconstitute in 20mM Tris, 150mM NaCl (pH8.0) to a concentration of 0.1-1.0 mg/mL.
Do not vortex.

STORAGE

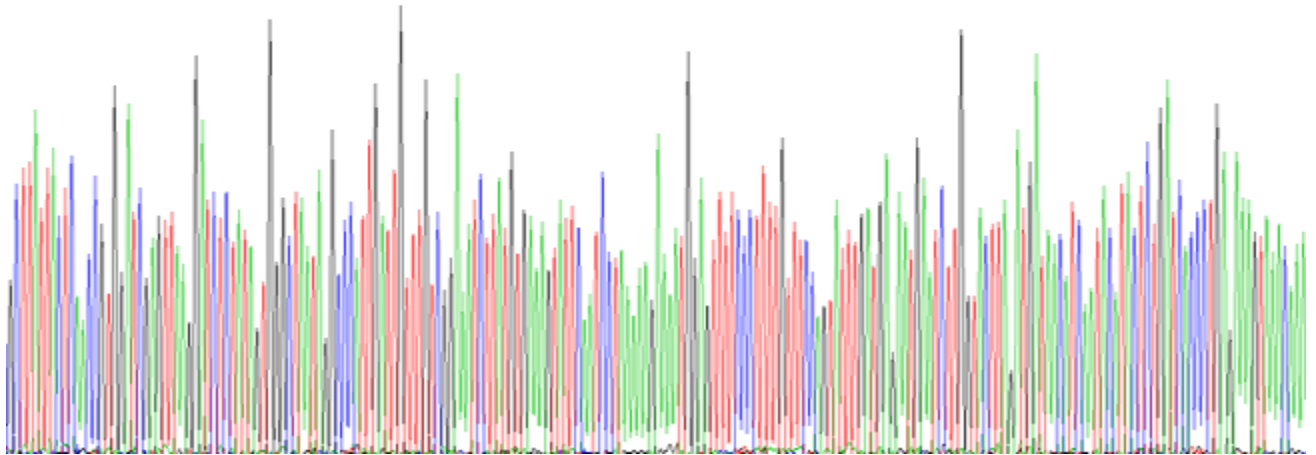
Avoid repeated freeze/thaw cycles. Store at 2-8°C for one month. Aliquot and store at -80°C for 12 months.

STABILITY

The thermal stability is described by the loss rate. The loss rate was determined by accelerated thermal degradation test, that is, incubate the protein at 37°C for 48h, and no obvious degradation and precipitation were observed. The loss rate is less than 5% within the expiration date under appropriate storage condition.

Image

CTTATCTCAGCCGTCGCTGCGTGGGACCTCTAGTGGCTTATAGGCTCTGCTGCTGGCTTCTAGCGAATTCATCCGAAAGCAATGGCATTCCTCCCTGCTCGATTCGATCGCATGCTCGTATTGATGAAATATAATATACTCTGTCACCTCGAAGTAAAGAA
A Y T S T V D R V K D L T S G L I G P L I V C R K S T V K V F N P K K K E F S L L F P V F D E W E S W Y L D D N I N T T S D E P E K V K



SDS-PAGE Image

[IMPORTANT NOTE]

The kit is designed for research use only, we will not be responsible for any issue if the kit was used in clinical diagnostic or any other procedures.