

Recombinant Pyruvate dehydrogenase alpha 1 (PDHA1) Instruction Manual

SIPA379Hu01

Homo sapiens (Human)

Source	Prokaryotic expression
Host	E.coli
Endotoxin Level	<1.0EU per 1µg (determined by the LAL method)
Subcellular Location	Mitochondrion
Predicted Molecular Mass	41.5kDa
Accurate Molecular Mass	46kDa(Analysis of differences refer to the manual)
Residues & Tags	Phe30~Ser390 with N-terminal His Tag
Buffer Formulation	100mMNaHCO ₃ , 500mMNaCl, pH8.3, containing 1mM EDTA, 1mM DTT, 0.01% SKL, 5% Trehalose and Proclin300.
Traits	Freeze-dried powder
Purity	> 90%
Isoelectric Point	6.5
Applications	Positive Control; Immunogen; SDS-PAGE; WB.

SEQUENCE

```
F ANDATFEIKK CDLHRLEEGP
PVTTVLTRD GLKYRMMQT VRRMELKADQ LYKQKIIRGF CHLCDGQEAC
CVGLEAGINP TDHLITAYRA HGFTFTRGLS VREILAEITG RKGCCAKGKG
GSMHMYAKNF YGGNGIVGAQ VPLGAGIALA CKYNGKDEVC LTLYGDGAAN
QQQIFEAYNM AALWKLPCIF ICENNRYGMG TSVERAAAST DYYKRGDFIP
GLRVDGMDIL CVREATRFAA AYCRSGKGPI LMELQTYRYH GHSMSPGVS
YRTREEIQEV RSKSDPIMLL KDRMVNSNLA SVEELKEIDV EVRKEIEDAA
QFATADPEPP LEELGYHIYS SDPPFEVRGA NQWIKFKSVS
```

USAGE

Reconstitute in ddH₂O to a concentration of 0.1-1.0 mg/mL. Do not vortex.

STORAGE

Avoid repeated freeze/thaw cycles. Store at 2-8°C for one month. Aliquot and store at -80°C for 12 months.

STABILITY

The thermal stability is described by the loss rate. The loss rate was determined by accelerated thermal degradation test, that is, incubate the protein at 37°C for 48h, and no obvious degradation and precipitation were observed. The loss rate is less than 5% within the expiration date under appropriate storage condition.

Image

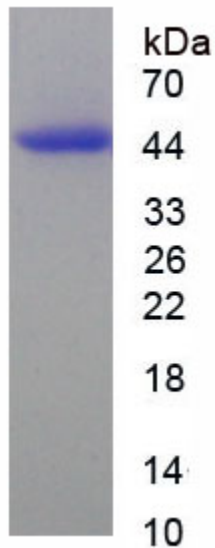


Figure. SDS-PAGE

[IMPORTANT NOTE]

The kit is designed for research use only, we will not be responsible for any issue if the kit was used in clinical diagnostic or any other procedures.