

# Recombinant Cytokeratin 16 (CK16)

## Instruction Manual

**SIPA382Hu01**

**Homo sapiens (Human)**

<b>Source</b>	Prokaryotic expression
<b>Host</b>	E.coli
<b>Endotoxin Level</b>	<1.0EU per 1µg (determined by the LAL method)
<b>Subcellular Location</b>	n/a
<b>Predicted Molecular Mass</b>	41.9kDa
<b>Accurate Molecular Mass</b>	39kDa(Analysis of differences refer to the manual)
<b>Residues &amp; Tags</b>	Glu117~Arg419 with N-terminal His Tag
<b>Buffer Formulation</b>	PBS, pH7.4, containing 0.01% SKL, 1mM DTT, 5% Trehalose and Proclin300.
<b>Traits</b>	Freeze-dried powder
<b>Purity</b>	> 97%
<b>Isoelectric Point</b>	4.9
<b>Applications</b>	Positive Control; Immunogen; SDS-PAGE; WB.

### SEQUENCE

```
          EKVT MQNLNDRLAS YLDKVRAL EE ANADLEVKIR
DWYQRQRPSE IKDYSPYFKT IEDLRNKIIA ATIENAQPIL QIDNARLAAD
DFRTKYEHEL ALRQTVEADV NGLRRVLDEL TLARTDLEMQ IEGLKEELAY
LRKNHEEEML ALRGQTGGDV NVEMDAAPGV DLSRILNEMR DQYEQMAEKN
RRDAETWFLS KTEELNKEVA SNESELVQSSR SEVTELRRVL QGLEIELQSQ
LSMKASLENS LEETKGRYCM QLSQIQGLIG SVEEQLAQLR CEMEQQSQEY
QILLDVKTRL EQEIATYRR
```

### USAGE

Reconstitute in 10mM PBS (pH7.4) to a concentration of 0.1-1.0 mg/mL. Do not vortex.

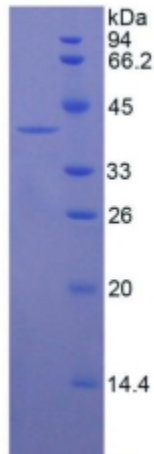
### STORAGE

Avoid repeated freeze/thaw cycles. Store at 2-8°C for one month. Aliquot and store at -80°C for 12 months.

## **STABILITY**

The thermal stability is described by the loss rate. The loss rate was determined by accelerated thermal degradation test, that is, incubate the protein at 37°C for 48h, and no obvious degradation and precipitation were observed. The loss rate is less than 5% within the expiration date under appropriate storage condition.

## **Image**



SDS-PAGE Image

## **[IMPORTANT NOTE]**

The kit is designed for research use only, we will not be responsible for any issue if the kit was used in clinical diagnostic or any other procedures.