

Recombinant Glycoprotein 130 (gp130) Instruction Manual

SIPA491Ra01

Rattus norvegicus (Rat)

Source	Prokaryotic expression
Host	E.coli
Endotoxin Level	<1.0EU per 1µg (determined by the LAL method)
Subcellular Location	Membrane
Predicted Molecular Mass	63.6kDa
Accurate Molecular Mass	64kDa(Analysis of differences refer to the manual)
Residues & Tags	Glu26~Asp323 with N-terminal His and GST Tag
Buffer Formulation	20mM Tris, 150mM NaCl, pH8.0, containing 1mM EDTA, 1mM DTT, 0.01% SKL, 5% Trehalose and Proclin300.
Traits	Freeze-dried powder
Purity	> 90%
Isoelectric Point	4.9
Applications	Positive Control; Immunogen; SDS-PAGE; WB.

SEQUENCE

```
                                EPCGY IYPEFPVVQR GSNFTATCVL
KEKCLQVYSV NATYIVWKTN HVAVPKEQVT VINRTASSVT FTDVVFQNVQ
LTCNILSFGQ IEQNVYGITI LSGYPPDIPT NLSCIVNEGK NMLCQLDPGR
ETYLETNYTL KSEWATEKFP DCRTKHGTSS CMMGYTPIYF VNIEVWVEAE
NALGNVSSEP INFDPVDKVK PSPPHNLSVT NSEELSSILK LAWVNSGLDS
ILRLKSDIQY RTKDASTWIQ VPLEDTVSPR TSFTVQDLKP FTEYVFRIRS
IKENGKGYWS DWSEEASGTT YED
```

USAGE

Reconstitute in 20mM Tris, 150mM NaCl (pH8.0) to a concentration of 0.1-1.0 mg/mL.
Do not vortex.

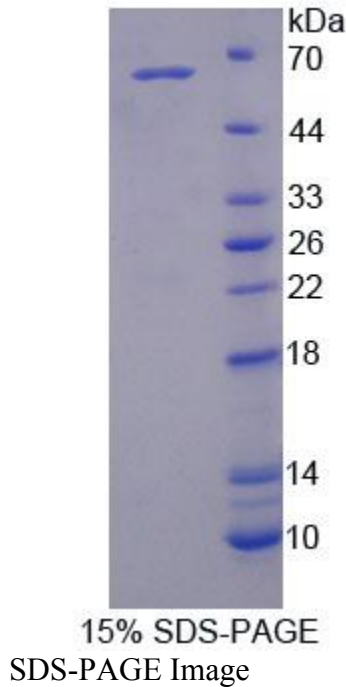
STORAGE

Avoid repeated freeze/thaw cycles. Store at 2-8°C for one month. Aliquot and store at -80°C for 12 months.

STABILITY

The thermal stability is described by the loss rate. The loss rate was determined by accelerated thermal degradation test, that is, incubate the protein at 37°C for 48h, and no obvious degradation and precipitation were observed. The loss rate is less than 5% within the expiration date under appropriate storage condition.

Image



[IMPORTANT NOTE]

The kit is designed for research use only, we will not be responsible for any issue if the kit was used in clinical diagnostic or any other procedures.