

# Recombinant Matrix Metalloproteinase 10 (MMP10) Instruction Manual

## SIPA494Ra01

### *Rattus norvegicus* (Rat)

<b>Source</b>	Prokaryotic expression
<b>Host</b>	E.coli
<b>Endotoxin Level</b>	<1.0EU per 1µg (determined by the LAL method)
<b>Subcellular Location</b>	Secreted, Extracellular matrix
<b>Predicted Molecular Mass</b>	38.9kDa
<b>Accurate Molecular Mass</b>	39kDa(Analysis of differences refer to the manual)
<b>Residues &amp; Tags</b>	Glu154~Thr465 with N-terminal His Tag
<b>Buffer Formulation</b>	PBS, pH7.4, containing 0.01% SKL, 5% Trehalose.
<b>Traits</b>	Freeze-dried powder
<b>Purity</b>	> 97%
<b>Isoelectric Point</b>	6.0
<b>Applications</b>	Positive Control; Immunogen; SDS-PAGE; WB.

### SEQUENCE

```
EGEADIM ISFAVGEHGD FYPFDGVGQS LAHAYPPGPG FYGDAHFD  
EKWSLGPST NLFLVAAHEL GHSLGLFHSN NKESLMYPVY RFSTSQANIR  
LSQDDIEGIQ SLYGARPSSD ATVVPVPSVS PKPETPVKCD PALSFDAVTM  
LRGEFLFFKD RHFWRRTQWN PEPEFHLISA FWPSLPSGLD AAYEANNKDR  
VLIFKGSQFW AVRGNEVQAG YPKRIHTLGF PPTVKKIDAA VFEKEKKKTY  
FFVGDKYWRF DETRQLMDKG FPRLITDDFP GIEPQVDAVL HAFGFFYFFC  
GSSQFEFDPN ARTVT
```

### USAGE

Reconstitute in ddH<sub>2</sub>O to a concentration of 0.1-0.5 mg/mL. Do not vortex.

### STORAGE

Avoid repeated freeze/thaw cycles. Store at 2-8°C for one month. Aliquot and store at -80°C for 12 months.

## **STABILITY**

The thermal stability is described by the loss rate. The loss rate was determined by accelerated thermal degradation test, that is, incubate the protein at 37°C for 48h, and no obvious degradation and precipitation were observed. The loss rate is less than 5% within the expiration date under appropriate storage condition.

### **Image**

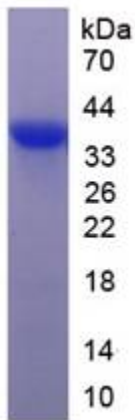


Figure. SDS-PAGE

### **[IMPORTANT NOTE]**

The kit is designed for research use only, we will not be responsible for any issue if the kit was used in clinical diagnostic or any other procedures.