

Recombinant Matrix Metalloproteinase 8 (MMP8) Instruction Manual

SIPA495Hu01

Homo sapiens (Human)

Source	Prokaryotic expression
Host	E.coli
Endotoxin Level	<1.0EU per 1µg (determined by the LAL method)
Subcellular Location	Secreted, Cytoplasm, Extracellular matrix
Predicted Molecular Mass	43.2kDa
Accurate Molecular Mass	43kDa(Analysis of differences refer to the manual)
Residues & Tags	Leu101~Gly467 with N-terminal His Tag
Buffer Formulation	PBS, pH7.4, containing 0.01% SKL, 1mM DTT, 5% Trehalose and Proclin300.
Traits	Freeze-dried powder
Purity	> 97%
Isoelectric Point	5.8
Applications	Positive Control; Immunogen; SDS-PAGE; WB.

SEQUENCE

```
LTPGNPKWER  TNLTyrIRNY  TPQLSEAEVE  RAIKDAFELW  SVASPLIFTR
ISQGEADINI  AFYQRDHGDN  SPFDGPN Gil  AHAFQPGQGI  GGDAHFDAEE
TWTNTSANYN  LFLVAAHEFG  HSLGLAHSSD  PGALMYPNYA  FRETSNYSLP
QDDIDGIQAI  YGLSSNPIQP  TGPSTPKPCD  PSLTFDAITT  LRGEILFFKD
RYFWRRHQPQ  QRVEMNFISL  FWPSLPTGIQ  AAYEDFDRDL  IFLFKGNQYW
ALSGYDILQG  YPKDISNYGF  PSSVQAIDAA  VFYRSKTYFF  VNDQFWRYDN
QRQFMEPGYP  KSI SGAFPGI  ESKVDAVFQQ  EHFFHVFS GP  RYYAFDLIAQ
RVTRVARGNK  WLNCRYG
```

USAGE

Reconstitute in PBS (pH7.4) to a concentration of 0.1-1.0 mg/mL. Do not vortex.

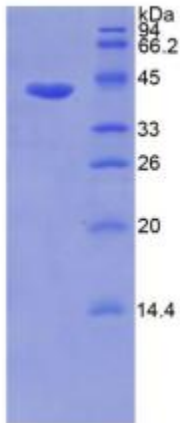
STORAGE

Avoid repeated freeze/thaw cycles. Store at 2-8°C for one month. Aliquot and store at -80°C for 12 months.

STABILITY

The thermal stability is described by the loss rate. The loss rate was determined by accelerated thermal degradation test, that is, incubate the protein at 37°C for 48h, and no obvious degradation and precipitation were observed. The loss rate is less than 5% within the expiration date under appropriate storage condition.

Image



SDS-PAGE Image

[IMPORTANT NOTE]

The kit is designed for research use only, we will not be responsible for any issue if the kit was used in clinical diagnostic or any other procedures.