

Recombinant Creatine Kinase, Muscle (CKM) Instruction Manual

SIPA587Ca01

Canis familiaris; Canine (Dog)

Source	Prokaryotic expression
Host	E.coli
Endotoxin Level	<1.0EU per 1µg (determined by the LAL method)
Subcellular Location	Cytoplasm
Predicted Molecular Mass	41.7kDa
Accurate Molecular Mass	42kDa(Analysis of differences refer to the manual)
Residues & Tags	Lys11~Leu367 with N-terminal His Tag
Buffer Formulation	PBS, pH7.4, containing 0.01% SKL, 5% Trehalose.
Traits	Freeze-dried powder
Purity	> 95%
Isoelectric Point	6.7
Applications	Positive Control; Immunogen; SDS-PAGE; WB.

SEQUENCE

```
KLNYKPEEEY PDLTKHNNHM AKALTPEIYK KLRDKETPSG
FTLDDVIQTG VDNPGHPFIM TVGCVAGDEE SYQVFKDLFD PIIQDRHGGY
KPTDKHKTDL NHENLKGDD LDPNYVLSSR VRTGRSIKGY TLPPHCSRGE
RRAVEKLSIE ALNSLTGEFK GKYYPLKSMT EQEQQLIDD HFLFDKPVSP
LLLASGMARD WPDARGIWHN DNKTFLVWVN EEDHLRVISM QKGGNMKEVF
RRFCVGLQKI EEIFKKAGHP FMWNEHLGYV LTCPSNLGTG LRGGVHVKLA
HLSKHPKFEE ILTRLRLQKR GTGGVDAAV GSVFDISNAD RLGSSVEVQV
QLVVDGVKLM VEMEKKL
```

USAGE

Reconstitute in 10mM PBS (pH7.4) to a concentration of 0.1-1.0 mg/mL. Do not vortex.

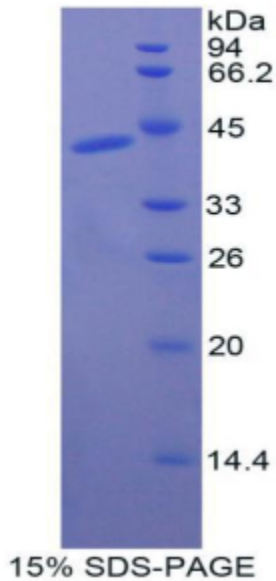
STORAGE

Avoid repeated freeze/thaw cycles. Store at 2-8°C for one month. Aliquot and store at -80°C for 12 months.

STABILITY

The thermal stability is described by the loss rate. The loss rate was determined by accelerated thermal degradation test, that is, incubate the protein at 37°C for 48h, and no obvious degradation and precipitation were observed. The loss rate is less than 5% within the expiration date under appropriate storage condition.

Image



SDS-PAGE Image

[IMPORTANT NOTE]

The kit is designed for research use only, we will not be responsible for any issue if the kit was used in clinical diagnostic or any other procedures.