

Recombinant Creatine Kinase, Muscle (CKM) Instruction Manual

SIPA587Rb01

Oryctolagus cuniculus (Rabbit)

Source	Prokaryotic expression
Host	E.coli
Endotoxin Level	<1.0EU per 1µg (determined by the LAL method)
Subcellular Location	Secreted
Predicted Molecular Mass	41.6kDa
Accurate Molecular Mass	42kDa(Analysis of differences refer to the manual)
Residues & Tags	Lys11~Leu367 with N-terminal His Tag
Buffer Formulation	20mM Tris, 150mM NaCl, pH8.0, containing 1mM EDTA, 1mM DTT, 0.01% SKL, 5% Trehalose and Proclin300.
Traits	Freeze-dried powder
Purity	> 90%
Isoelectric Point	7.1
Applications	Positive Control; Immunogen; SDS-PAGE; WB.

SEQUENCE

```
KLNYKSEEEY PDLSKHNNHM AKVLTPDLYK KLRDKETPSG
FTLDDVIQTG VDNPGHPFIM TVGCVAGDEE SYTVFKDLFD PIIQDRHGGF
KPTDKHKTDL NHENLKGDD LDPHYVLSSR VRTGRSIKGY TLPPHCSRGE
RRAVEKLSVE ALNSLTGEFK GKYYPLKSMT EQEQQLIDD HFLFDKPVSP
LLLASGMARD WPDARGIWHN DNKSFLVWVN EEDHLRVISM EKGGNMKEVF
RRFCVGLQKI EEIFKKAGHP FMWNEHLGYV LTCPSNLGTG LRGGVHVKLA
HLSKHPKFEE ILTRLRLQKR GTGGVDAAV GSVFDISNAD RLGSEVEQV
QLVVDGVKLM VEMEKKL
```

USAGE

Reconstitute in 20mM Tris, 150mM NaCl (pH8.0) to a concentration of 0.1-1.0 mg/mL.
Do not vortex.

STORAGE

Avoid repeated freeze/thaw cycles. Store at 2-8°C for one month. Aliquot and store at -80°C for 12 months.

STABILITY

The thermal stability is described by the loss rate. The loss rate was determined by accelerated thermal degradation test, that is, incubate the protein at 37°C for 48h, and no obvious degradation and precipitation were observed. The loss rate is less than 5% within the expiration date under appropriate storage condition.

Image

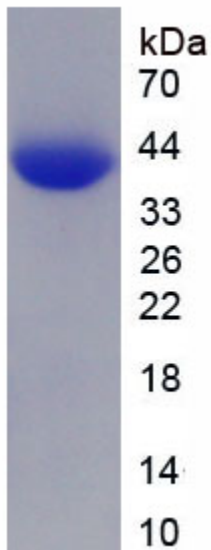


Figure. SDS-PAGE

[IMPORTANT NOTE]

The kit is designed for research use only, we will not be responsible for any issue if the kit was used in clinical diagnostic or any other procedures.