

Recombinant Matrix Metalloproteinase 1 (MMP1) Instruction Manual

SIPA606Bo01

Bos taurus; Bovine (Cattle)

Source	Prokaryotic expression
Host	E.coli
Endotoxin Level	<1.0EU per 1µg (determined by the LAL method)
Subcellular Location	Secreted, Extracellular matrix
Predicted Molecular Mass	55.1kDa
Accurate Molecular Mass	55kDa(Analysis of differences refer to the manual)
Residues & Tags	Phe19~Asn469 with N-terminal His Tag
Buffer Formulation	100mMNaHCO ₃ , 500mMNaCl, pH8.3, containing 1mM EDTA, 1mM DTT, 0.01% SKL, 5% Trehalose and Proclin300.
Traits	Freeze-dried powder
Purity	> 90%
Isoelectric Point	5.8
Applications	Positive Control; Immunogen; SDS-PAGE; WB.

SEQUENCE

```
FP AATSETQEQD VETVKKYLEN YYNLNSNGKK
VERQRNGGLI TEKLKQMOKF FGLRVTGKPD AETLNVKQP RCGVPDVAPF
VLTPGKSCWE NTNLTYSRIEN YTPDLRADV DQAIEKAFQL WSNVTPLTFT
KVSEGGADIM ISFVRGDHRD NSPFDGPGGN LAHAFQPGAG IGGDAHFDSD
EWWTSNFQDY NLYRVAHEF GHSLGLAHST DIGALMYPST TFSGDVQLSQ
DDIDGIQAIY GPSQNPTQPV GPQTPEVCDK KLTFDAITTI RGEVMFFKDR
FYMRTNPLYP EVELNFISVF WPQLPGLQA AYEVAADRDEV RFFKGNKYWA
VKGQDVLRGY PRDIYRSFGF PRTVKSIDAA VSEEDTGKTY FVANKCWRY
DEYKQSM DAG YPKMIAEDFP GIGNKVDVAV QKGGFFYFFH GRRQYKFDPPQ
TKRILTLLKA NSWFNCRKN
```

USAGE

Reconstitute in ddH₂O to a concentration of 0.1-1.0 mg/mL. Do not vortex.

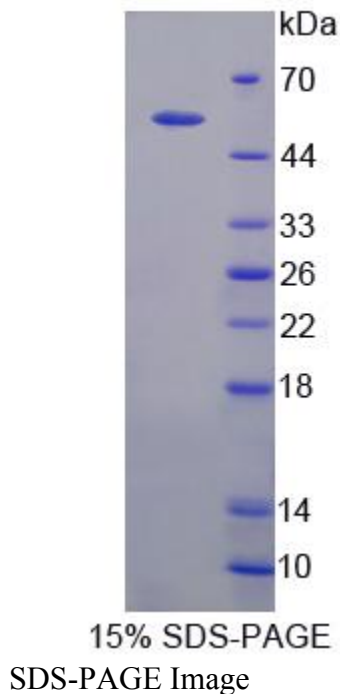
STORAGE

Avoid repeated freeze/thaw cycles. Store at 2-8°C for one month. Aliquot and store at -80°C for 12 months.

STABILITY

The thermal stability is described by the loss rate. The loss rate was determined by accelerated thermal degradation test, that is, incubate the protein at 37°C for 48h, and no obvious degradation and precipitation were observed. The loss rate is less than 5% within the expiration date under appropriate storage condition.

Image



[IMPORTANT NOTE]

The kit is designed for research use only, we will not be responsible for any issue if the kit was used in clinical diagnostic or any other procedures.