

Recombinant Matrix Metalloproteinase 3 (MMP3) Instruction Manual

SIPA607Ra02

Rattus norvegicus (Rat)

Source	Prokaryotic expression
Host	E.coli
Endotoxin Level	<1.0EU per 1µg (determined by the LAL method)
Subcellular Location	Secreted, Extracellular matrix
Predicted Molecular Mass	46.2kDa
Accurate Molecular Mass	55kDa(Analysis of differences refer to the manual)
Residues & Tags	Phe98~Cys475 with N-terminal His Tag
Buffer Formulation	100mMNaHCO ₃ , 500mMNaCl, pH8.3, containing 1mM EDTA, 1mM DTT, 0.01% SKL, 5% Trehalose and Proclin300.
Traits	Freeze-dried powder
Purity	> 90%
Isoelectric Point	5.5
Applications	Positive Control; Immunogen; SDS-PAGE; WB.

SEQUENCE

FST
FPGSPKWRKN HISYRIVNYT LDLPRESVDS AIERALKVWE EVTPLTFSRI
SEGEADIMIS FAVEEHGDFI PFDGPGMVLA HAYAPGPGTN GDAHFDDDER
WTDDVTGTNL FLVAAHELGH SLGLFHSANA EALMYPVYKS STDLARFHLS
QDDVDGIQSL YGPPTESPVDV LVVPTKSNSL DPETLPMCSS ALSFDAVSTL
RGEVLFFKDR HFWRKSLRTP EPGFYLISSF WPSLPSNMDA AYEVTNRDTV
FILKGNQIWA IRGHEELAGY PKSIHTLGLP ETVQKIDAAI SLKDQKKTYF
FVEDKFWRFD EKKQSMDFEF PRKIAENFPG IGTKVDAVFE AFGFLYFFSFG
SSQLEFDPNA GKVTHILKSN SWFNC

USAGE

Reconstitute in 100mM NaHCO₃, 500mM NaCl (pH8.3) to a concentration of 0.1-1.0 mg/mL. Do not vortex.

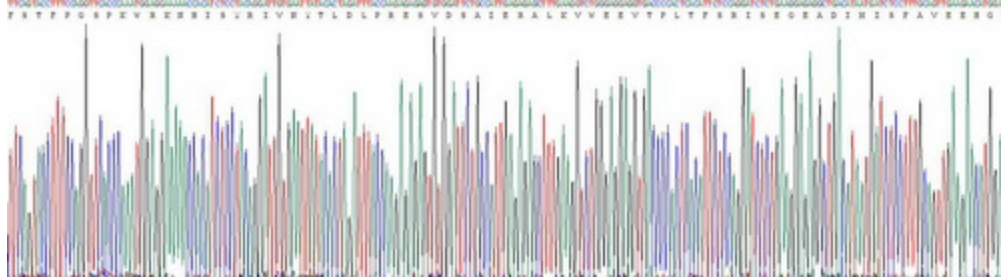
STORAGE

Avoid repeated freeze/thaw cycles. Store at 2-8°C for one month. Aliquot and store at -80°C for 12 months.

STABILITY

The thermal stability is described by the loss rate. The loss rate was determined by accelerated thermal degradation test, that is, incubate the protein at 37°C for 48h, and no obvious degradation and precipitation were observed. The loss rate is less than 5% within the expiration date under appropriate storage condition.

Image



SDS-PAGE Image

[IMPORTANT NOTE]

The kit is designed for research use only, we will not be responsible for any issue if the kit was used in clinical diagnostic or any other procedures.