

# Recombinant Connexin 43 (CX43) Instruction Manual

## SIPA613Ra01

### *Rattus norvegicus* (Rat)

<b>Source</b>	Prokaryotic expression
<b>Host</b>	E.coli
<b>Endotoxin Level</b>	<1.0EU per 1µg
<b>Subcellular Location</b>	Membrane
<b>Predicted Molecular Mass</b>	26.1kDa
<b>Accurate Molecular Mass</b>	26kDa(Analysis of differences refer to the manual)
<b>Residues &amp; Tags</b>	Ser180~Ile382 with N-terminal His Tag
<b>Buffer Formulation</b>	20mM Tris, 150mM NaCl, pH8.0, containing 1mM EDTA, 1mM DTT, 0.01% SKL, 5% Trehalose and Proclin300.
<b>Traits</b>	Freeze-dried powder
<b>Purity</b>	> 95%
<b>Isoelectric Point</b>	9.0
<b>Applications</b>	Positive Control; Immunogen; SDS-PAGE; WB.

### SEQUENCE

```
                S LSAVYTCKRD PCPHQVDCFL  
SRPTEKTIFI IFMLVVSLVS LALNIIELFY VFFKGVKDRV KGRSDPYHAT  
TGPLSPSKDC GSPKYAYFNG CSSPTAPLSP MSPPGYKLVT GDRNNSSCRN  
YNKQASEQNW ANYSAEQNRM GQAGSTISNS HAQPFDFPDD NQNAKKVAAG  
HELQPLAIVD QRPSSRASSR ASSRPRPDDL EI
```

### USAGE

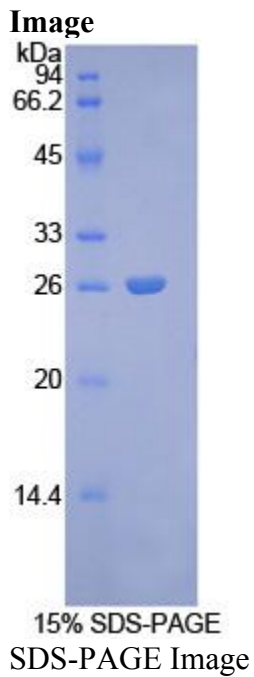
Reconstitute in 20mM Tris, 150mM NaCl (pH8.0) to a concentration of 0.1-1.0 mg/mL.  
Do not vortex.

### STORAGE

Avoid repeated freeze/thaw cycles. Store at 2-8°C for one month. Aliquot and store at -80°C for 12 months.

## STABILITY

The thermal stability is described by the loss rate. The loss rate was determined by accelerated thermal degradation test, that is, incubate the protein at 37°C for 48h, and no obvious degradation and precipitation were observed. The loss rate is less than 5% within the expiration date under appropriate storage condition.



### **[IMPORTANT NOTE]**

The kit is designed for research use only, we will not be responsible for any issue if the kit was used in clinical diagnostic or any other procedures.