

# Recombinant Complement Factor H (CFH) Instruction Manual

**SIPA620Hu02**

**Homo sapiens (Human)**

<b>Source</b>	Prokaryotic expression
<b>Host</b>	E.coli
<b>Endotoxin Level</b>	<1.0EU per 1µg (determined by the LAL method)
<b>Subcellular Location</b>	Secreted
<b>Predicted Molecular Mass</b>	38.0kDa
<b>Accurate Molecular Mass</b>	38kDa(Analysis of differences refer to the manual)
<b>Residues &amp; Tags</b>	Glu19~Leu322 with N-terminal His Tag
<b>Buffer Formulation</b>	20mM Tris, 150mM NaCl, pH8.0, containing 1mM EDTA, 1mM DTT, 0.01% SKL, 5% Trehalose and Proclin300.
<b>Traits</b>	Freeze-dried powder
<b>Purity</b>	> 90%
<b>Isoelectric Point</b>	5.5
<b>Applications</b>	Positive Control; Immunogen; SDS-PAGE; WB.

## SEQUENCE

```
ED CNELPPRRNT EILTGSDSDQ TYPEGTQAIY  
KCRPGYRSLG NVIMVCRKGE WVALNPLRKC QKRPCGHPGD TPGTFTLTG  
GNVFEYGVKA VYTCNEGYQL LGEINYRECD TDGWTNDIPI CEVVKCLPVT  
APENKIVSS AMEPDREYHF GQAVRFVCNS GYKIEGDEEM HCSDDGFWSK  
EKPKCVEISC KSPDVINGSP ISQKIIYKEN ERFQYKCNMG YEYSERGDAV  
CTESGWRPLP SCEEKSCDNP YIPNGDYSPL RIKHRTGDEI TYQCRNGFYP  
ATRGNTAKCT STGWIPAPRC TL
```

## USAGE

Reconstitute in 20mM Tris, 150mM NaCl (pH8.0) to a concentration of 0.1-1.0 mg/mL.  
Do not vortex.

## STORAGE

Avoid repeated freeze/thaw cycles. Store at 2-8°C for one month. Aliquot and store at -80°C for 12 months.

## **STABILITY**

The thermal stability is described by the loss rate. The loss rate was determined by accelerated thermal degradation test, that is, incubate the protein at 37°C for 48h, and no obvious degradation and precipitation were observed. The loss rate is less than 5% within the expiration date under appropriate storage condition.

### **Image**

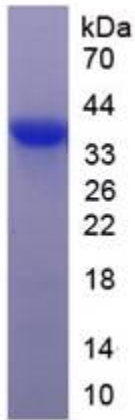


Figure. SDS-PAGE

### **[IMPORTANT NOTE]**

The kit is designed for research use only, we will not be responsible for any issue if the kit was used in clinical diagnostic or any other procedures.