

Recombinant Complement Factor H (CFH) Instruction Manual

SIPA620Mu02

Mus musculus (Mouse)

Source	Prokaryotic expression
Host	E.coli
Endotoxin Level	<1.0EU per 1µg (determined by the LAL method)
Subcellular Location	Secreted
Predicted Molecular Mass	70.2kDa
Accurate Molecular Mass	70kDa(Analysis of differences refer to the manual)
Residues & Tags	Ser877~Val1234 with N-terminal His and GST Tag
Buffer Formulation	20mM Tris, 150mM NaCl, pH8.0, containing 1mM EDTA, 1mM DTT, 0.01% SKL, 5% Trehalose and Proclin300.
Traits	Freeze-dried powder
Purity	> 95%
Isoelectric Point	7.6
Applications	Positive Control; Immunogen; SDS-PAGE; WB.

SEQUENCE

```
SINL PRSSEERRDS IESSSHEHGT  
TFSVVCDDGF RIPEENRITC YMGKWSTPPR CVGLPCGPPP SIPLGTVSLE  
LESYQHGEV TYHCSTGFGI DGPAFIICEG GKWSDPPKCI KTDCDVLPTV  
KNAIIRGKSK KSYRTGEQVT FRCQSPYQMN GSDTVTCVNS RWIGQPVCKD  
NSCVDPPHPV NATIVTRTKN KYLHGDRVRY ECKNPLELFG QVEVMCENGI  
WTEKPKCRDS TGKCGPPPPI DNGDITSLSL PVYEPLSSVE YQCQKYLLK  
GKKTITCRNG KWSEPPTCLH ACVIPENIME SHNIILKWRH TEKIYSHSGE  
DIEFGCKYGY YKARDSPPFR TKCINGTINY PTCV
```

USAGE

Reconstitute in 20mM Tris, 150mM NaCl (pH8.0) to a concentration of 0.1-1.0 mg/mL.
Do not vortex.

STORAGE

Avoid repeated freeze/thaw cycles. Store at 2-8°C for one month. Aliquot and store at -80°C for 12 months.

STABILITY

The thermal stability is described by the loss rate. The loss rate was determined by accelerated thermal degradation test, that is, incubate the protein at 37°C for 48h, and no obvious degradation and precipitation were observed. The loss rate is less than 5% within the expiration date under appropriate storage condition.

Image

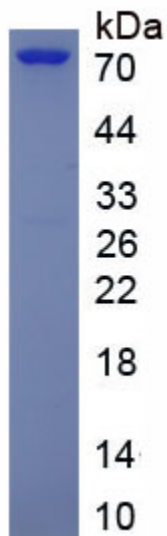


Figure. SDS-PAGE

[IMPORTANT NOTE]

The kit is designed for research use only, we will not be responsible for any issue if the kit was used in clinical diagnostic or any other procedures.