

# Recombinant Neuropilin 1 (NRP1) Instruction Manual

## SIPA624Ra04

### *Rattus norvegicus* (Rat)

|                                 |   |
|---------------------------------|---|
| <b>Source</b>                   | Prokaryotic expression  |
| <b>Host</b>                     | E.coli  |
| <b>Endotoxin Level</b>          | <1.0EU per 1µg (determined by the LAL method)                                   |
| <b>Subcellular Location</b>     | Membrane; Single-pass type I membrane prote                                     |
| <b>Predicted Molecular Mass</b> | 75.4kDa   |
| <b>Accurate Molecular Mass</b>  | n/a(Analysis of differences refer to the manual)                                |
| <b>Residues &amp; Tags</b>      | Cys27~Thr152 (Accession # Q9QWJ9) with Two N-terminal Tags, His-tag and MBP-tag |
| <b>Buffer Formulation</b>       | PBS, pH7.4, containing 0.01% SKL, 1mM DTT, 5% Trehalose and Proclin300.         |
| <b>Traits</b>                   | Freeze-dried powder   |
| <b>Purity</b>                   | > 95%   |
| <b>Isoelectric Point</b>        | 5.4   |
| <b>Applications</b>             | Positive Control; Immunogen; SDS-PAGE; WB.                                      |

### USAGE

Reconstitute in PBS or others.

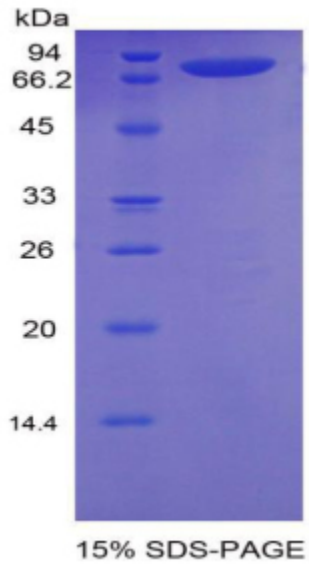
### STORAGE

Avoid repeated freeze/thaw cycles. Store at 2-8°C for one month. Aliquot and store at -80°C for 12 months.

### STABILITY

The thermal stability is described by the loss rate. The loss rate was determined by accelerated thermal degradation test, that is, incubate the protein at 37°C for 48h, and no obvious degradation and precipitation were observed. The loss rate is less than 5% within the expiration date under appropriate storage condition.

## Image



SDS-PAGE Image

### **[IMPORTANT NOTE]**

The kit is designed for research use only, we will not be responsible for any issue if the kit was used in clinical diagnostic or any other procedures.