

# Recombinant Matrix Metalloproteinase 23B (MMP23B) Instruction Manual

**SIPA637Hu01**

**Homo sapiens (Human)**

<b>Source</b>	Prokaryotic expression
<b>Host</b>	E.coli
<b>Endotoxin Level</b>	<1.0EU per 1µg (determined by the LAL method)
<b>Subcellular Location</b>	Secreted
<b>Predicted Molecular Mass</b>	39.8kDa
<b>Accurate Molecular Mass</b>	40kDa(Analysis of differences refer to the manual)
<b>Residues &amp; Tags</b>	Tyr79~Gly390 with N-terminal His Tag
<b>Buffer Formulation</b>	PBS, pH7.4, containing 0.01% SKL, 5% Trehalose.
<b>Traits</b>	Freeze-dried powder
<b>Purity</b>	> 97%
<b>Isoelectric Point</b>	9.6
<b>Applications</b>	Positive Control; Immunogen; SDS-PAGE; WB.

## SEQUENCE

```
                YT LTPARLRWDH FNLTYRILSF  
PRNLLSPRET RRALAAAFRM WSDVSPFSFR EVAPEQPSDL RIGFYPIHHT  
DCLVSALHHC FDGPTGELAH AFFPPHGGIH FDDSEYWVLG PTRYSWKKGV  
WLTDLVHVAA HEIGHALGLM HSQHGRALMH LNATLRGWKA LSQDELWGLH  
RLYGCLDRLF VCASWARRGF CDARRRLMKR LCPSSCDFCY EFPFPTVATT  
PPPPRTKTRL VPEGRNVTFR CGQKILHKKG KVVWYKDQEP LEFSYPGYLA  
LGEAHLIIA NAVNEGTYTC VVRRQQRVLT TYSWRVVRVG
```

## USAGE

Reconstitute in ddH<sub>2</sub>O to a concentration of 0.1-0.5 mg/mL. Do not vortex.

## STORAGE

Avoid repeated freeze/thaw cycles. Store at 2-8°C for one month. Aliquot and store at -80°C for 12 months.

## STABILITY

The thermal stability is described by the loss rate. The loss rate was determined by accelerated thermal degradation test, that is, incubate the protein at 37°C for 48h, and no obvious degradation and precipitation were observed. The loss rate is less than 5% within the expiration date under appropriate storage condition.

## Image

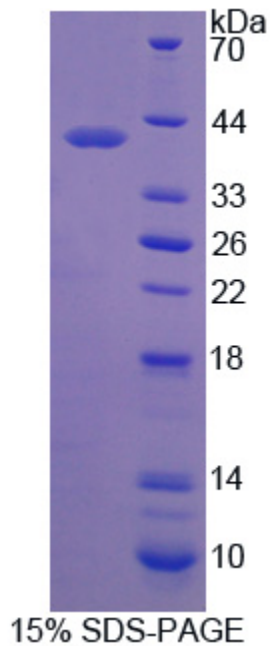


Figure. SDS-PAGE

## **[IMPORTANT NOTE]**

The kit is designed for research use only, we will not be responsible for any issue if the kit was used in clinical diagnostic or any other procedures.